

Trail Blazing

Trail blazing is used for wayfinding on outdoor trails. LSC uses the hiker badge, shown below, to keep you on track. The North Trail has blue hikers, and the Miller Creek Interpretive Trail is green.

You may see pink painted stakes or colored flags throughout the campus landscape. These are not trail markers, but survey stakes used by the Civil Engineering Technology program.



Lake Superior College

2101 Trinity Road
Duluth, MN 55811

Contact LSC's Sustainability Office
218-733-7731
E-mail: sustainability@lsc.edu

Take a HIKE on LSC's NORTH TRAIL



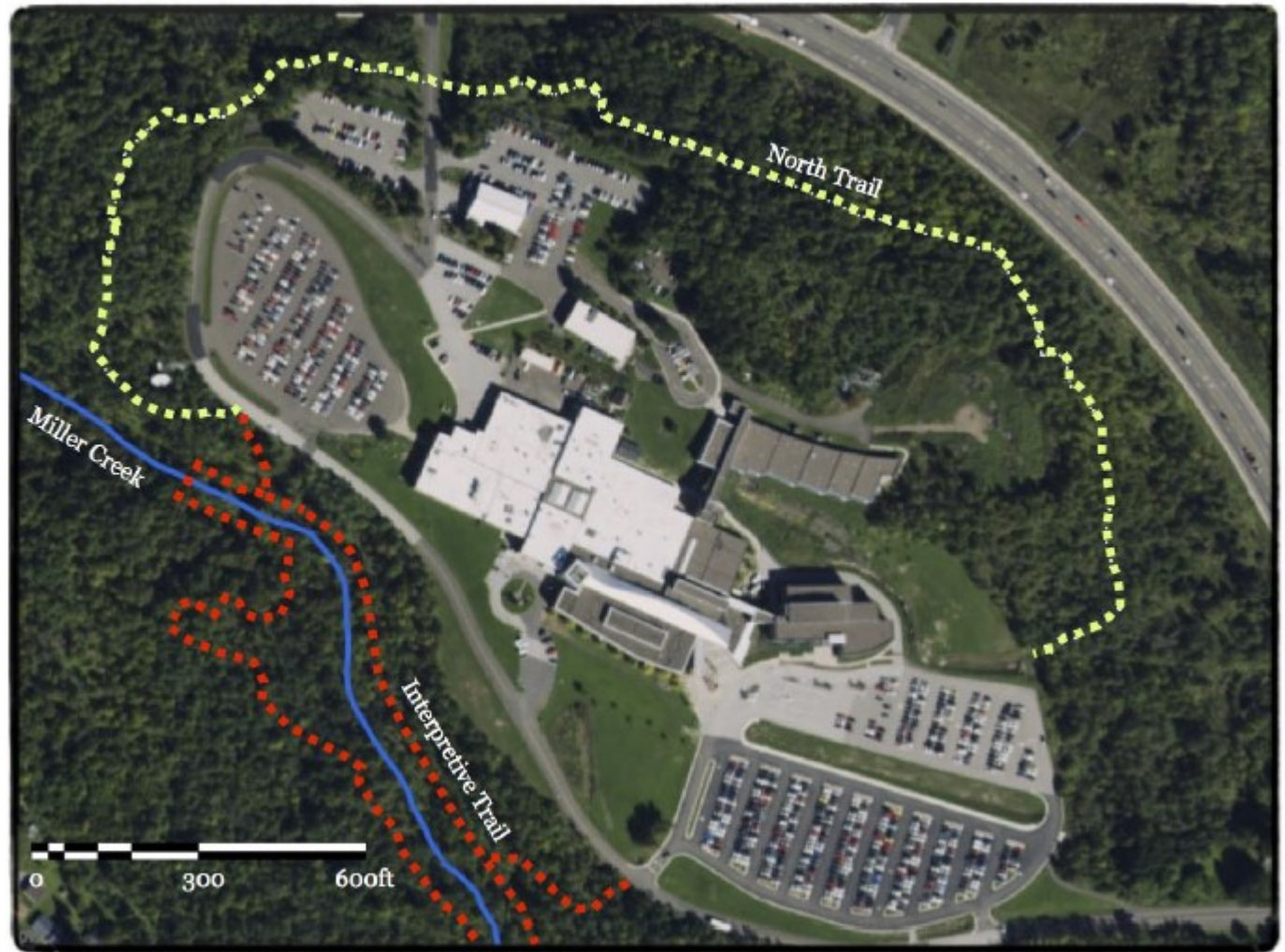
Log some Miles

From the east end of the North Trail:

For a **1.1 mile** full-campus loop, walk counter-clockwise and complete the full North Trail. Continue to the upper portion of the Interpretive Trail (north side of Miller Creek), then walk through the parking lot back to your starting point.

Add the full **0.75 mile** Interpretive Trail loop to your hike, and return on a clockwise path to the North Trail start to complete a **2 mile all-trail** hike.

*Find more information at :
LSC homepage > Sustainability > Miller
Creek Interpretive Trail*



Legend



North Trail



Interpretive Trail



Miller Creek



Trail Blazing

Trail blazing is used for wayfinding on outdoor trails. LSC uses the hiker badge, shown below, to keep you on track. The North Trail has blue hikers, and the Miller Creek Interpretive Trail is green.

You may see pink painted stakes or colored flags throughout the campus landscape. These are not trail markers, but survey stakes used by the Civil Engineering Technology program.



Lake Superior College

2101 Trinity Road
Duluth, MN 55811

Contact LSC's Sustainability Office
218-733-7731
E-mail: sustainability@lsc.edu

Take a HIKE on LSC's MILLER CREEK INTERPRETIVE TRAIL



Sustainability

Log some Miles

The Miller Creek Interpretive Trail alone is about a **0.75 mile** loop.

See the *NORTH TRAIL* map for a **1.1 or 2 mile** hike plan.

Exercise your Mind

14 sites of geologic and ecologic interest are highlighted with informational signs throughout the length of the trail. The Interpretive Trail crosses Miller Creek at two points, and stream quality monitoring occurs, in partnership with UMD's Natural Resources Research Institute, at the lower bridge site.

Find more information at :
[LSC homepage > Sustainability > Miller Creek Interpretive Trail](#)

