

Enrollment Trends

Table 1
Fiscal Year Headcounts 2002 to 2011

	FY02	FY03	FY04	FY05	FY06	FY07	FY08	FY09	FY10	FY11
Summer I	1,006	1,188	1,244	1,499	1,318	1,126	1,282	1,359	1,377	1,397
Summer II										
Fall	4,255	4,645	4,800	5,261	4,994	4,805	5,008	5,031	4,923	5,316
Winter										
Spring	5,852	6,203	6,393	6,401	6,547	5,999	6,157	6,367	6,564	6,375
FY Duplicated HC	11,113	12,036	12,437	13,161	12,859	11,930	12,447	12,757	12,864	13,088
FY Unduplicated HC	7,778	8,339	8,475	8,876	8,698	8,084	8,344	8,513	8,685	8,606

Source: MnSCU ITS Management Reports, FYE by Campus, 9/01/2011

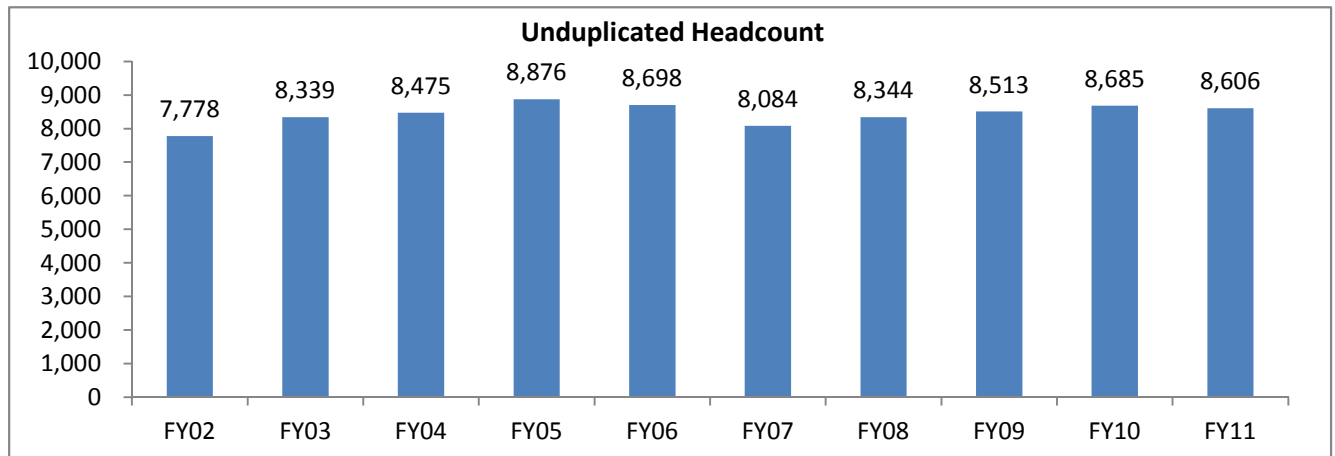


Table 2
FYE- Historic and Projected

Actual Enrollment						Projected Enrollment			
FY06	FY07	FY08	FY09	FY10	FY11	FY12	FY13	FY14	FY15
3,396	3,279	3,415	3,549	3,679	3,675	3,773	3,830	3,888	3,825

Source: MnSCU Finance Division as of September 2011

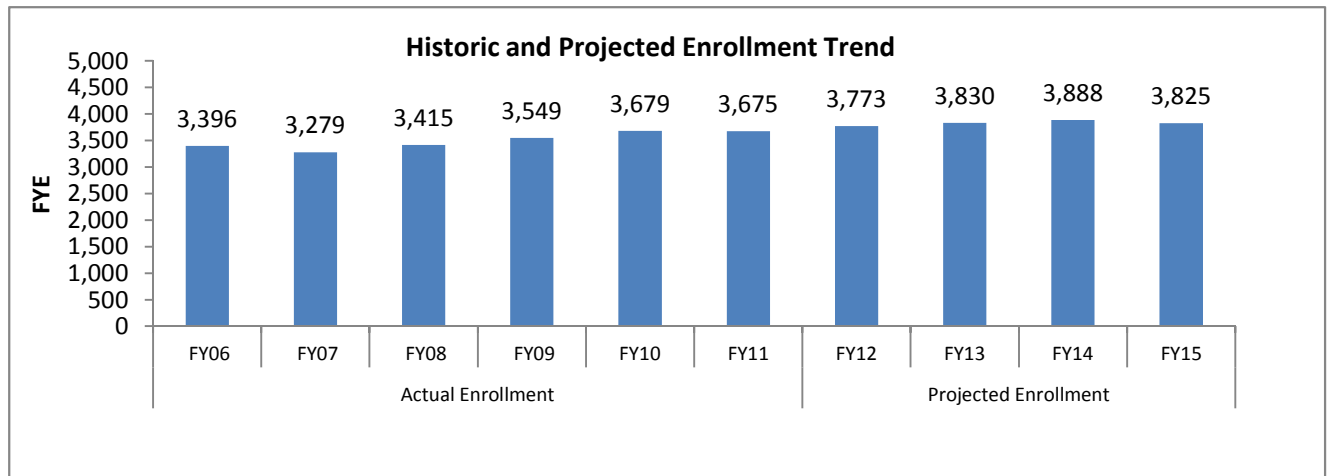


Table 3
Headcount and FTE - 10th Day - Fall Terms

	Fall 07	Fall 08	Fall 07- Fall 08 % Change	Fall 09	Fall 08- Fall 09 % Change	Fall 10	Fall 09- Fall 10 % Change	Fall 11	Fall 10- Fall 11 % Change
Headcount	4099	4,174	2%	4,283	3%	4,426	3%	4,502	2%
FTE	2883	2,970	3%	3,070	3%	3,115	1%	3,099	-1%

Source: 10th Day Enrollment Tables/MnSCU ISRS Operational Data

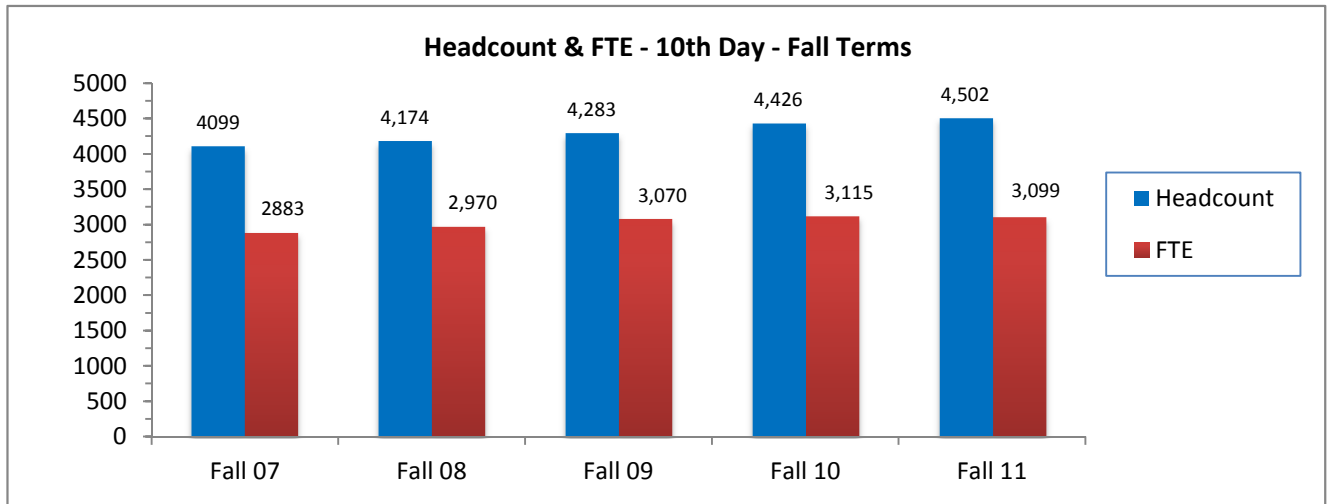


Table 4
Headcount and FTE - 30th Day - Fall Terms

	Fall 07	Fall 08	Fall 07- Fall 08 % Change	Fall 09	Fall 08- Fall 09 % Change	Fall 10	Fall 09- Fall 10 % Change	Fall 11	Fall 10- Fall 11 % Change
Headcount	4,318	4,343	1%	4,454	3%	4,515	1%	4,652	3%
FTE	2,919	3,003	3%	3,122	4%	3,141	1%	3,138	0%

Source: 30th Day Enrollment Tables/MnSCU ISRS Operational Data

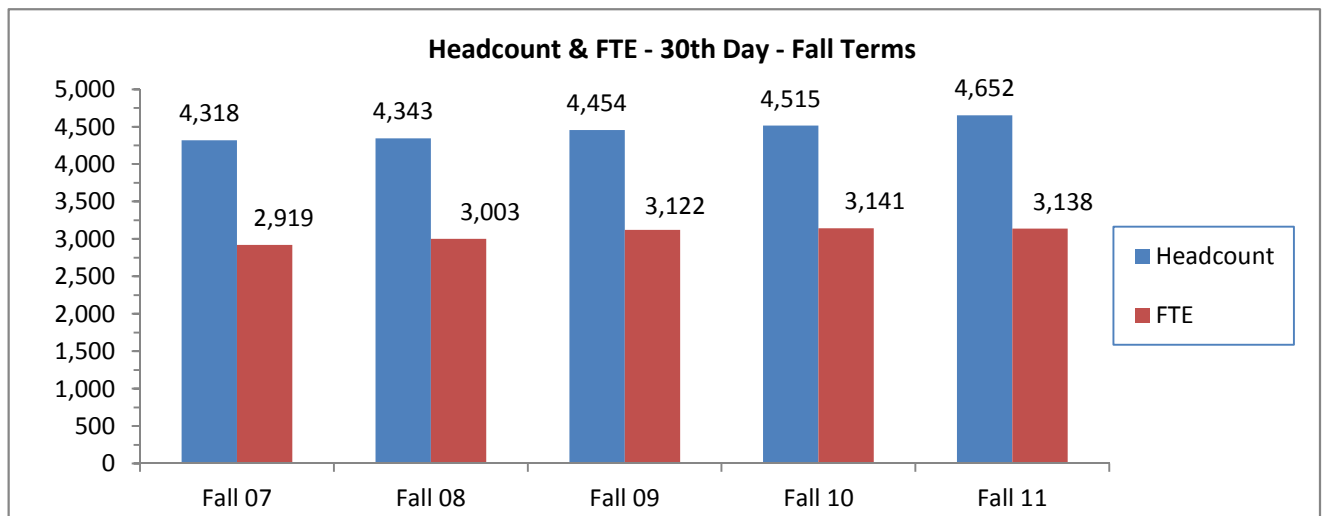


Table 5
Full-time/Part-time - 30th Day - Fall Terms

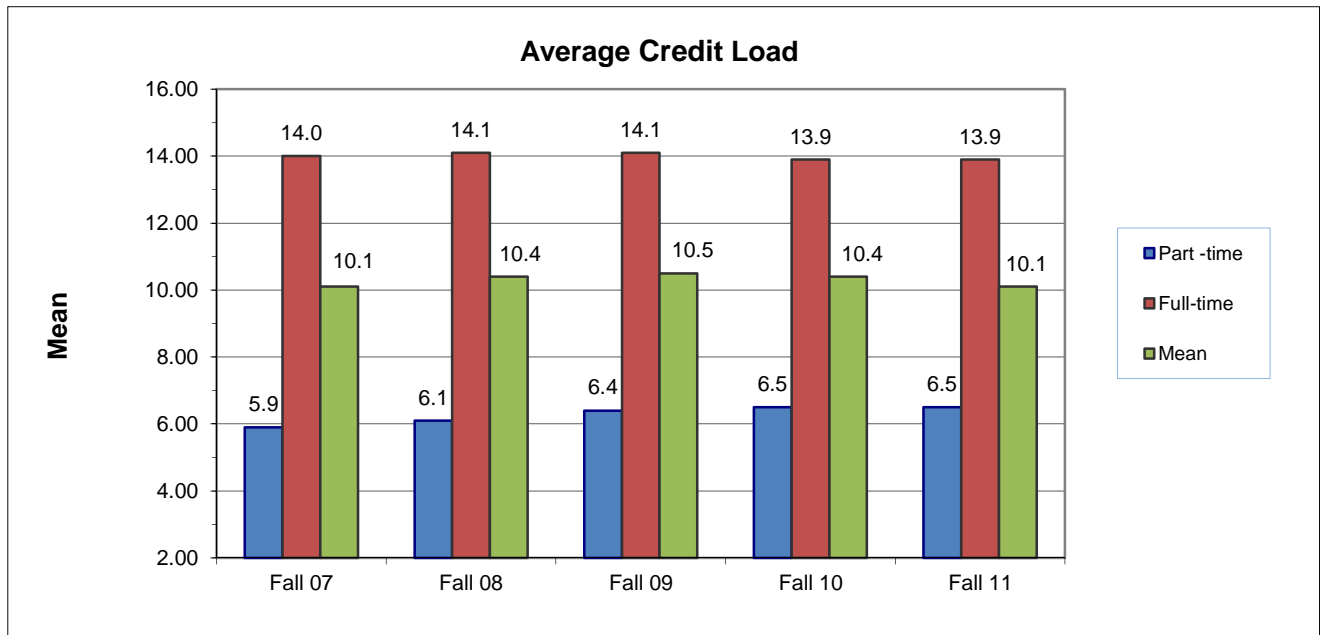
	Fall 07		Fall 08		Fall 09		Fall 10		Fall 11	
	Count	Percent	Count	Percent	Count	Percent	Count	Percent	Count	Percent
Part-time	2,057	48%	2,024	47%	2,065	46%	2,109	47%	2,358	51%
Full-time	2,261	52%	2,319	53%	2,389	54%	2,406	53%	2,294	49%
Total	4,318		4,343		4,454		4,515		4,652	

Source: 30th Day Enrollment Tables/MnSCU ISRS Operational Data

Table 6
Average Credit Load (Mean) by Term

	Fall 07	Fall 08	Fall 09	Fall 10	Fall 11
Part-time	5.9	6.1	6.4	6.5	6.5
Full-time	14.0	14.1	14.1	13.9	13.9
Mean	10.1	10.4	10.5	10.4	10.1

Source: 30th Day Enrollment Tables/MnSCU ISRS Operational Data

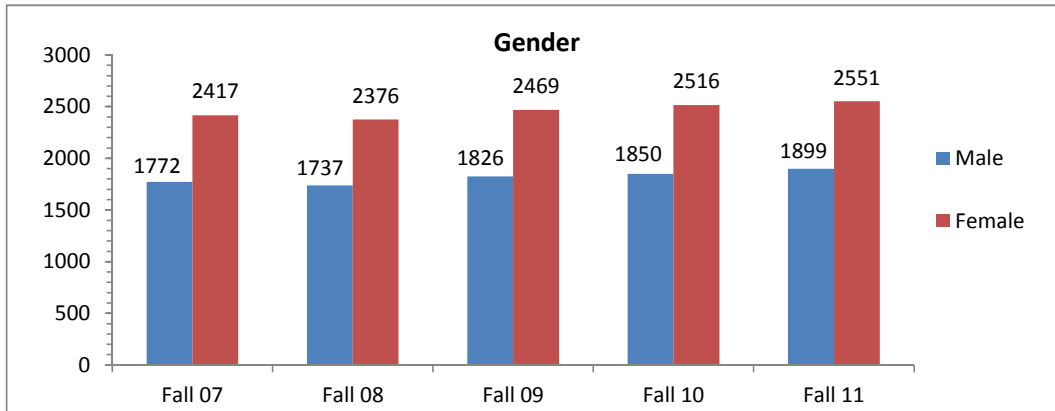


Student Demographic and Academic Profile

**Table 7
Gender Distribution**

	Fall 07		Fall 08		Fall 09		Fall 10		Fall 11	
	Count	Percent	Count	Percent	Count	Percent	Count	Percent	Count	Percent
Male	1,772	41%	1,737	40%	1,826	41%	1,850	41%	1,899	41%
Female	2,417	56%	2,376	55%	2,469	55%	2,516	56%	2,551	55%
Unknown	129	3%	230	5%	159	4%	149	3%	202	4%
Total	4,318		4,343		4,454		4,515		4,652	

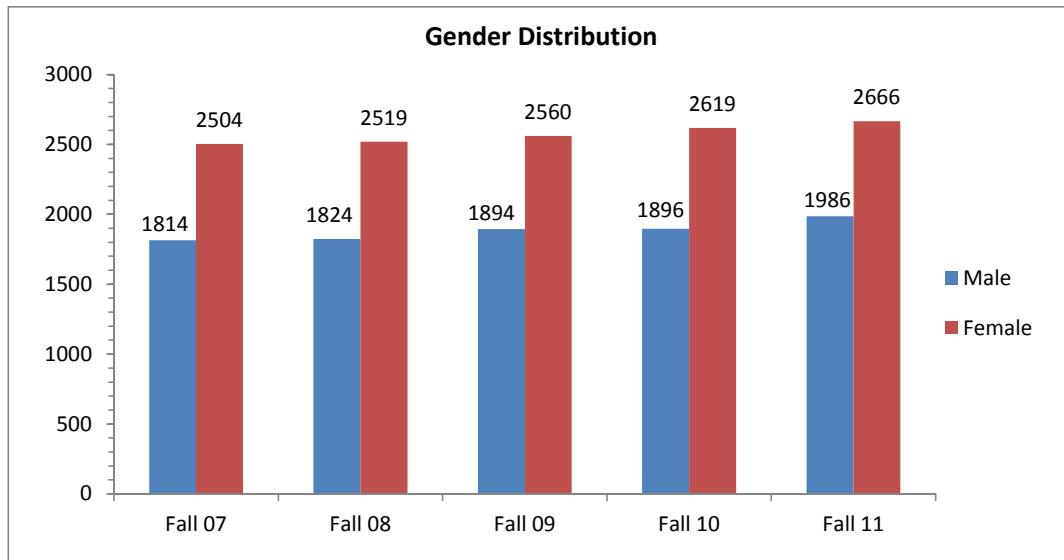
Source: 30th Day Enrollment Tables/MnSCU ISRS Operational Data



**Table 8
Gender Distribution with Unknowns Distributed Proportionately**

	Fall 07		Fall 08		Fall 09		Fall 10		Fall 11	
	Count	Percent	Count	Percent	Count	Percent	Count	Percent	Count	Percent
Male	1,814	42%	1,824	42%	1,894	42%	1,896	42%	1,986	43%
Female	2,504	58%	2,519	58%	2,560	58%	2,619	58%	2,666	57%
Total	4,318		4,343		4,454		4,515		4,652	

*Unknown gender was distributed proportionately.



**Table 9
Age Group**

	Fall 07		Fall 08		Fall 09		Fall 10		Fall 11	
	Count	Percent	Count	Percent	Count	Percent	Count	Percent	Count	Percent
Under 18	270	6%	187	4%	241	5%	178	4%	164	4%
18-20	1,409	33%	1,449	33%	1,389	31%	1,365	30%	1,335	29%
21-24	1,112	26%	1,117	26%	1,092	25%	1,139	25%	1,170	25%
25-29	620	14%	639	15%	707	16%	740	16%	727	16%
30-39	468	11%	481	11%	544	12%	604	13%	744	16%
40 and older	345	8%	400	9%	445	10%	468	10%	485	10%
No response	94	2%	70	2%	36	1%	21	0%	27	1%
Total	4,318		4,343		4,454		4,515		4,652	

Source: 30th Day Enrollment Tables/MnSCU ISRS Operational Data

**Table 10
Traditional Age (24 or less) vs. Non-Traditional**

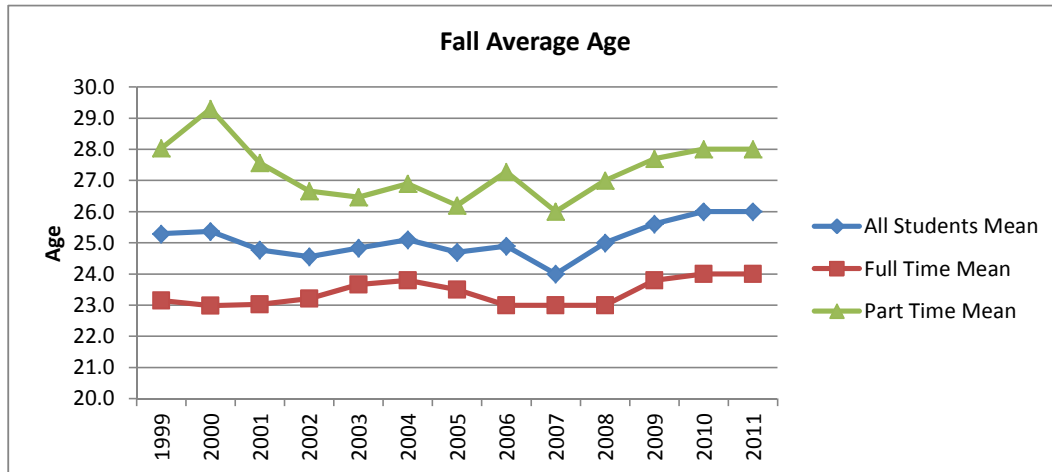
	Fall 07		Fall 08		Fall 09		Fall 10		Fall 11	
	Count	Percent	Count	Percent	Count	Percent	Count	Percent	Count	Percent
Traditional	2,791	65%	2,753	63%	2,722	61%	2,682	59%	2,669	57%
Non-traditional	1,433	33%	1,520	35%	1,696	38%	1,812	40%	1,956	42%
No response	94	2%	70	2%	36	1%	21	0%	27	1%
Total	4,318		4,343		4,454		4,515		4,652	

Source: 30th Day Enrollment Tables/MnSCU ISRS Operational Data

**Table 11
Average Age**

	All Students Mean	Full Time Mean	Part Time Mean
Fall 2006	25	23	27
Fall 2007	25	23	27
Fall 2008	25	23	27
Fall 2009	26	24	28
Fall 2010	26	24	28
Fall 2011	26	24	28

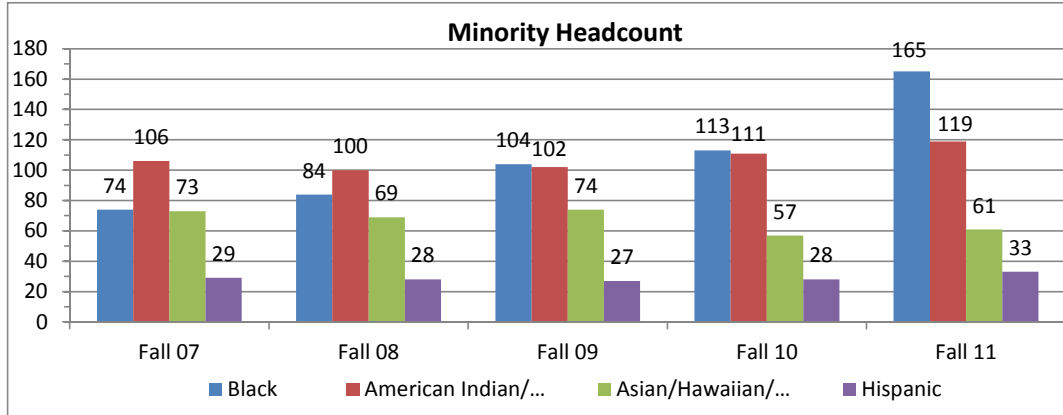
Source: 30th Day Enrollment Tables/MnSCU ISRS Operational Data



**Table 12
Ethnicity**

	Fall 07		Fall 08		Fall 09		Fall 10		Fall 11	
	Count	Percent	Count	Percent	Count	Percent	Count	Percent	Count	Percent
Black	74	2%	84	2%	104	2%	113	3%	165	4%
American Indian/ Alaskan Native	106	2%	100	2%	102	2%	111	2%	119	3%
Asian/Hawaiian/ Pac Isl	73	2%	69	2%	74	2%	57	1%	61	1%
Hispanic	29	1%	28	1%	27	1%	28	1%	33	1%
White	3,807	88%	3,739	86%	3,877	87%	3,950	87%	3,985	86%
Unknown	229	5%	323	7%	270	6%	215	5%	289	6%
Total	4,318		4,343		4,454		4,515		4,652	

Source: 30th Day Enrollment Tables/MnSCU ISRS Operational Data



**Table 13
Student Level**

	Fall 07		Fall 08		Fall 09		Fall 10		Fall 11	
	Count	Percent	Count	Percent	Count	Percent	Count	Percent	Count	Percent
Freshman	2,831	66%	2,693	62%	2,888	65%	2,840	63%	2,823	61%
Sophomore	1,487	34%	1,650	38%	1,566	35%	1,675	37%	1,829	39%
Total	4,318		4,343		4,454		4,515		4,652	

Freshmen have earned 30 credits or less and sophomores have earned more than 30 credits.

Source: 30th Day Enrollment Tables/MnSCU ISRS Operational Data

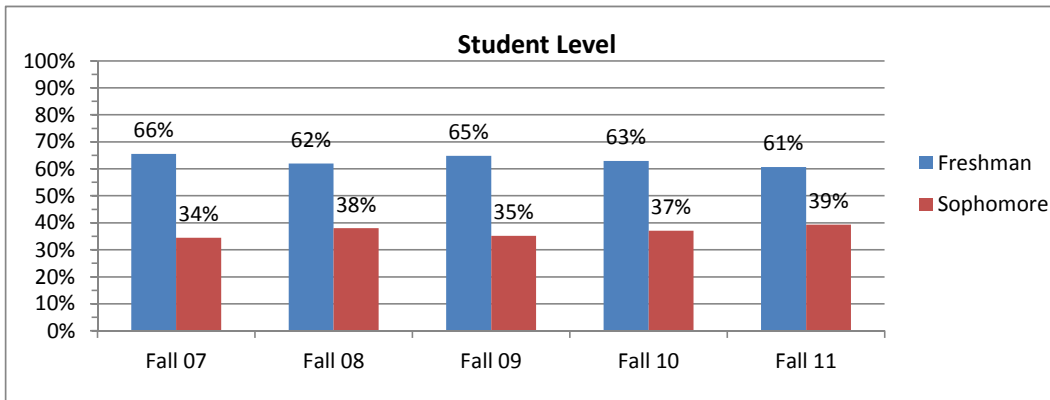


Table 14
All New and Returning Students

	Fall 07		Fall 08		Fall 09		Fall 10		Fall 11	
	Count	Percent	Count	Percent	Count	Percent	Count	Percent	Count	Percent
New*	1,761	41%	1,692	39%	1,696	38%	1,479	33%	1,739	37%
Return	2,557	59%	2,651	61%	2,758	62%	3,036	67%	2,913	63%
Total	4,318		4,343		4,454		4,515		4,652	

Source: 30th Day Enrollment Tables/MnSCU ISRS Operational Data

*New students includes those who started in Summer and Fall, including new students with transfer credits.

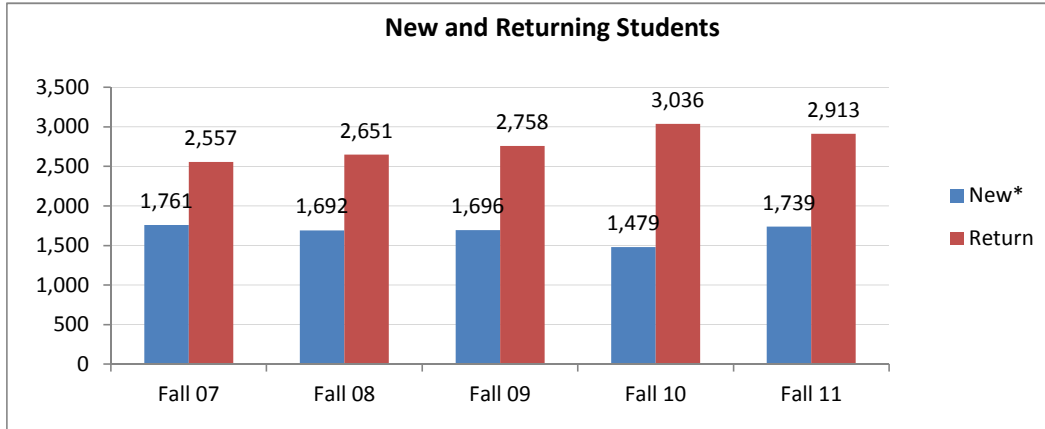


Table 15
Fall New Entering Freshman Distribution

	Fall									
	2007		2008		2009		2010		2011	
	Count	Percent	Count	Percent	Count	Percent	Count	Percent	Count	Percent
Full-time/Part-time										
Part-time	740	56%	645	51%	635	50%	708	50%	716	59%
Full-time	592	44%	620	49%	626	50%	696	50%	503	41%
Total	1,332		1,265		1,261		1,404		1,219	
Gender										
Male	582	44%	548	43%	542	43%	674	48%	491	40%
Female	657	49%	535	42%	591	47%	625	45%	558	46%
Unknown	93	7%	182	14%	128	10%	105	7%	170	14%
Ethnicity										
Black	24	2%	31	2%	37	3%	41	3%	52	4%
Native Am.	39	3%	37	3%	41	3%	30	2%	32	3%
Asian	29	2%	10	1%	16	1%	22	2%	17	1%
Hispanic	7	1%	7	1%	9	1%	7	0%	10	1%
White	1123	84%	948	75%	942	75%	1161	83%	906	74%
Unknown	110	8%	232	18%	216	17%	126	9%	194	16%
Age										
Under 18	187	14%	120	9%	115	9%	108	8%	107	9%
18-20	645	48%	661	52%	568	45%	682	49%	560	46%
21-24	171	13%	172	14%	203	16%	232	17%	192	16%
25-29	115	9%	93	7%	122	10%	143	10%	117	10%
30-39	80	6%	83	7%	101	8%	118	8%	126	10%
40 and older	76	6%	102	8%	132	10%	110	8%	100	8%
Unknown	58	4%	34	3%	20	2%	11	1%	17	1%

Source: 30th Day Enrollment Tables/MnSCU ISRS Operational Data

*New students (by admit stat) includes those who started in the summer or fall, not including transfer students.

Table 16
County of Residence

	Fall 07		Fall 08		Fall 09		Fall 10		Fall 11	
	Count	Percent	Count	Percent	Count	Percent	Count	Percent	Count	Percent
Minnesota										
St Louis	1,346	31%	2,050	47%	2,117	48%	1,863	42%	1,784	38%
Carlton	204	5%	269	6%	272	6%	255	6%	246	5%
Lake	87	2%	136	3%	146	3%	132	3%	131	3%
Pine	96	2%	82	2%	85	2%	81	2%	84	2%
Hennepin	43	1%	64	1%	57	1%	59	1%	71	2%
Itasca	36	1%	53	1%	51	1%	37	1%	45	1%
Anoka	24	1%	40	1%	37	1%	39	1%	38	1%
Ramsey	20	0.5%	17	0.4%	21	0.5%	24	0.5%	34	1%
Dakota	16	0.4%	35	0.8%	34	1%	32	1%	32	1%
Washington	20	0.5%	23	0.5%	25	1%	26	1%	32	1%
Chisago	11	0.3%	19	0.4%	23	1%	21	0%	32	1%
Cook	13	0.3%	28	0.6%	33	1%	32	1%	25	1%
Crow Wing	34	1%	26	1%	26	1%	20	0%	19	0%
Wright	10	0.2%	19	0.4%	18	0.4%	15	0.3%	19	0%
Sherburne	14	0.3%	18	0.4%	17	0.4%	23	0.5%	18	0%
Aitkin	28	1%	28	1%	30	1%	24	1%	17	0%
Kanabec	9	0.2%	10	0.2%	14	0.3%	12	0.3%	16	0%
Carver	2	0.0%	4	0.1%	11	0.2%	14	0.3%	15	0%
Scott	2	0.0%	6	0.1%	17	0.4%	20	0.4%	14	0%
Stearns	7	0.2%	15	0.3%	15	0.3%	16	0.4%	12	0%
Cass	1	0.0%	2	0.0%	11	0.2%	13	0.3%	12	0%
McLeod	2	0.0%	5	0.1%	11	0.2%	9	0.2%	12	0%
Douglas	1	0.0%	1	0.0%	14	0.3%	9	0.2%	9	0%
Otter Tail	10	0.2%	23	0.5%	11	0.2%	12	0.3%	8	0%
Hubbard	3	0.1%	3	0.1%	14	0.3%	10	0.2%	7	0%
Clay	0	0.0%	8	0.2%	14	0.3%	5	0.1%	6	0%
Isanti	7	0.2%	15	0.3%	11	0.2%	8	0.2%	6	0%
Koochiching	8	0.2%	12	0.3%	10	0.2%	10	0.2%	6	0%
Beltrami	5	0.1%	11	0.3%	9	0.2%	3	0.1%	3	0%
Other* MN	152	4%	264	6%	140	3%	171	4%	122	3%
Unknown MN	1,635	38%	365	8%	109	2%	119	3%	164	4%
South Dakota	4	0.1%	2	0.0%	1	0.0%	2	0.0%	2	0%
Wisconsin										0%
Douglas	160	4%	239	5%	274	6%	263	6%	281	6%
Unknown WI	190	4%	47	1%	84	2%	10	0%	31	1%
Other WI	46	1%	108	2%	50	1%	135	3%	122	3%
Other State	62	1%	52	1%	62	1%	61	1%	86	2%
Unknown	21	0%	273	6%	580	13%	930	21%	1,091	23%
Total	4,329		4,372		4,454		4,515		4,652	

Source: 30th Day Enrollment Tables/MnSCU ISRS Operational Data

Table 17
High School Attended of New* Students

High School	Fall 07		Fall 08		Fall 09		Fall 10		Fall 11	
	Count	Percent	Count	Percent	Count	Percent	Count	Percent	Count	Percent
Duluth Central	69	4%	71	4%	93	5%	66	4%	99	6%
Duluth East	73	4%	88	5%	77	5%	94	6%	79	5%
Hermantown	98	6%	40	2%	47	3%	45	3%	46	3%
Denfeld	73	4%	100	6%	97	6%	65	4%	43	3%
Proctor Sr	29	2%	42	3%	31	2%	36	2%	35	2%
Pillager	9	1%	3	0%	7	0%	6	0%	27	2%
Cloquet Sr	33	2%	32	2%	29	2%	29	2%	24	1%
Two Harbors	22	1%	23	1%	39	2%	25	1%	21	1%
Moose Lake	14	1%	13	1%	17	1%	17	1%	18	1%
Lincoln	27	2%	24	1%	21	1%	22	1%	16	1%
Willow River	14	1%	8	0%	10	1%	14	1%	16	1%
Carlton	9	1%	13	1%	6	0%	9	1%	16	1%
Harbor City Int'l	13	1%	16	1%	12	1%	11	1%	15	1%
Cook Co	1	0%	25	1%	20	1%	20	1%	14	1%
Barnum	16	1%	10	1%	14	1%	6	0%	14	1%
Eveleth-Gilbert Sr	9	1%	12	1%	5	0%	15	1%	13	1%
Virginia Sec.	12	1%	8	0%	11	1%	13	1%	13	1%
Hinckley-Finlayson	31	2%	19	1%	4	0%	5	0%	13	1%
Brainerd Sr	12	1%	9	1%	8	0%	10	1%	12	1%
Grand Rapids	21	1%	9	1%	19	1%	12	1%	11	1%
Wrenshall	18	1%	9	1%	11	1%	7	0%	10	1%
Mora	9	1%	5	0%	5	0%	4	0%	10	1%
Pine City	8	0%	5	0%	12	1%	8	0%	9	1%
Owatonna					6	0%	2	0%	9	1%
McGregor	16	1%	15	1%	15	1%	11	1%	7	0%
Unity					6	0%	3	0%	7	0%
Hibbing	9	1%	16	1%	15	1%	11	1%	6	0%
Floodwood	18	1%	9	1%	8	0%	10	1%	6	0%
Marshall	8	0%	8	0%	6	0%	9	1%	6	0%
Pequot Lakes	6	0%	9	1%	14	1%	10	1%	5	0%
Mesabi East Senior	13	1%	4	0%	9	1%	8	0%	5	0%
East Central	4	0%	3	0%	8	0%	6	0%	5	0%
Greenway	9	1%	3	0%	7	0%	1	0%	5	0%
Jefferson Senior					6	0%	1	0%	5	0%
William M Kelley	10	1%	10	1%	8	0%	7	0%	4	0%
Cromwell Wright	10	1%	6	0%	6	0%	3	0%	4	0%
Moorhead					6	0%	4	0%	3	0%
Deer River					7	0%	2	0%	3	0%
Memorial Senior					6	0%	2	0%	3	0%
Aitkin					8	0%	5	0%	2	0%
Detroit Lakes					6	0%	8	0%	1	0%
Big Lake					8	0%	3	0%	1	0%
Crosby Ironton					6	0%	6	0%	0	0%
Albrook	8	0%	5	0%	9	1%	2	0%	0	0%
Monticello					6	0%	1	0%	0	0%
Other MN	316	18%	371	22%	333	20%	363	21%	488	30%
Unknown	349	20%	305	18%	184	11%	125	7%	37	2%
Superior Sr - WI	45	3%	52	3%	73	4%	61	4%	52	3%
Northwestern - WI	6	0%	9	1%	6	0%	9	1%	18	1%
Ashland - WI	4	0%	6	0%	7	0%	9	1%	4	0%
Webster - WI	4	0%	3	0%	3	0%	1	0%	3	0%
Other WI	48	3%	59	4%	65	4%	60	4%	74	4%
Other State(s)	104	6%	64	4%	91	5%	57	3%	96	6%
Other - GED	104	6%	93	6%	135	8%	110	6%	166	10%
Other - Home School	20	1%	28	2%	28	2%	24	1%	34	2%
Other - International	5	0%	9	1%		0%	6	0%	18	1%
Total	1,736		1,671		1,696		1,479		1,651	

Source: 30th Day Enrollment Tables/MnSCU ISRS Operational Data

*New students includes those who started in Summer and Fall, including new students with transfer credits.

Table 18
Student FYE by Program - 5 Year Comparison
Sorted by FY 2011 FYE

Program*	CIP Code	Student FYE					One Year % Change FY10to FY11	Five Year % Change FY07 to FY11
		FY07	FY08	FY09	FY10	FY11		
Liberal Arts and Sciences	240101	1007.83	1021.89	1087.55	1061.28	1130.60	6.5%	12.2%
Registered Nursing	513801	123.93	165.93	257.68	346.50	377.47	8.9%	204.6%
Fire Prevention and Safety	430201	107.80	102.47	118.00	148.03	115.53	-22.0%	7.2%
Radiologic Technology	510911	102.70	104.37	98.20	111.87	102.00	-8.8%	-0.7%
Business Administration	520201	89.03	80.07	85.88	111.87	97.37	-13.0%	9.4%
Dental Hygiene	510602	74.40	83.10	79.85	90.03	84.50	-6.1%	13.6%
Licensed Practical Nursing	513901	271.33	252.35	178.30	89.42	69.22	-22.6%	-74.5%
Physical Therapy Tech.	510806	44.67	50.43	54.00	59.10	63.97	8.2%	43.2%
Electrician	460302	70.53	62.83	70.57	70.87	62.43	-11.9%	-11.5%
Accounting	520301	55.43	69.03	57.40	57.80	59.87	3.6%	8.0%
Automobile/Automotive Tech.	470604	44.80	53.40	49.20	47.60	54.93	15.4%	22.6%
Surgical Technology	510909	44.43	39.30	52.10	57.45	54.13	-5.8%	21.8%
Carpentry/Carpenter	460201	50.67	61.90	52.57	62.30	52.00	-16.5%	2.6%
Diagnostic Medical Sonography	510910		42.37	56.53	59.40	51.73	-12.9%	100.0%
Computer Systems Networking	110901	33.97	32.37	25.83	44.40	50.50	13.7%	48.7%
Legal Assistant/Paralegal	220302	38.30	40.97	40.20	40.73	47.23	16.0%	23.3%
Civil Engineering Tech.	150201	26.53	28.37	34.27	40.50	46.33	14.4%	74.6%
Electrical, Electronic Tech.	150303	28.77	36.60	46.33	48.23	45.73	-5.2%	59.0%
Welding Technology/Welder	480508	5.30	14.97	32.83	51.03	43.60	-14.6%	722.6%
Respiratory Care Therapist	510908	39.60	45.20	44.33	42.42	41.63	-1.8%	5.1%
Airline/Commercial/Prof. Pilot	490102	17.53	10.00	22.60	22.43	31.43	40.1%	79.3%
Medical/Clinical Assist.	510801	21.13	23.33	17.07	29.27	29.67	1.4%	40.4%
Clinical/Medical Labo	511004	28.90	24.37	23.23	27.53	28.85	4.8%	-0.2%
Medical Administrative	510716	7.43	14.93	15.60	19.55	27.40	40.2%	268.6%
CAD/CADD Drafting	151302	10.73	14.40	12.95	25.47	27.37	7.5%	155.0%
Web Page, Digital/Multimedia	110801	19.23	20.83	15.67	25.23	23.73	-5.9%	23.4%
Autobody/Collision & Repair Tech.	470603	16.73	19.77	21.00	25.00	23.63	-5.5%	41.2%
Fine/Studio Arts	500702	8.40	12.73	18.50	20.63	22.73	10.2%	170.6%
Architectural Drafting	151303	33.43	30.70	27.07	25.33	22.37	-11.7%	-33.1%
Machine Tool Technology	480501	17.43	20.90	28.48	23.93	19.97	-16.6%	14.5%

* Programs listed are those with largest FY11 FYE
Source: MnSCU ISRS Operational Data / ST03 pMajors CIP

Academic Information

Table 19
FY2011 Student/Faculty FTE/FYE Ratios by Discipline

	Student FYE				One Year	Two Year	Student/Faculty Ratio				One Year	Two Year	Faculty FTE		
	FY08	FY09	FY10	FY11	% Change	% Change	FY08	FY09	FY10	FY11	% Change	% Change	FY09	FY10	FY11
					FY10 to	FY09 to					FY10 to	FY09 to			
Anthropology	10.40	6.20	6.80	9.80	44.1%	58.1%	23.64	41.33	34.00	49.00	44.1%	18.6%	0.15	0.20	0.20
Art	64.77	74.40	134.53	148.57	10.4%	99.7%	19.33	21.69	19.16	23.21	21.2%	7.0%	3.43	7.02	6.40
Astronomy	11.60	15.20	14.80	14.93	0.9%	-1.8%	21.89	22.68	27.92	22.28	-20.2%		0.53	0.53	0.67
Biology	285.87	301.63	319.27	329.90	3.3%	9.4%	30.00	29.03	31.09	30.24	-2.7%	4.2%	10.39	10.27	10.91
Chemistry	57.07	51.40	46.93	67.67	44.2%	31.7%	33.57	29.71	28.10	32.85	16.9%	10.6%	1.73	1.67	2.06
Communication	116.40	104.63	109.30	119.33	9.2%	14.0%	30.23	30.33	32.92	31.16	-5.4%	2.7%	3.45	3.32	3.83
Economics	45.70	35.20	47.50	41.30	-13.1%	17.3%	38.40	64.00	47.50	34.42	-27.5%	-46.2%	0.55	1.00	1.20
Education	1.27	9.88	3.53	3.40	-3.7%	-65.6%	7.94	58.12	23.53	26.15	11.2%	-55.0%	0.17	0.15	0.13
English	265.60	254.93	271.40	267.50	-1.4%	4.9%	27.49	25.34	27.53	24.93	-9.4%	-1.6%	10.06	9.86	10.73
First Year Experience	28.90	44.83	49.23	47.40	-3.7%	5.7%	29.19	29.69	30.58	24.43	-20.1%	-17.7%	1.51	1.61	1.94
Geography	24.00	27.17	25.50	26.97	5.8%	-0.7%	23.30	26.38	28.33	23.87	-15.8%	-9.5%	1.03	0.90	1.13
Geology	29.60	35.07	32.53	31.33	-3.7%	-10.7%	22.60	23.86	24.46	23.56	-3.7%	-1.3%	1.47	1.33	1.33
History/Political Science	100.50	91.10	88.70	98.00	10.5%	7.6%	35.02	30.94	45.03	42.61	-5.4%	37.7%	2.28	1.97	2.30
History	78.80	72.20	62.90	73.90	17.5%	2.4%	48.05	42.98	47.65	43.47	-8.8%	1.1%	1.68	1.32	1.70
Political Science	21.70	18.90	25.80	24.10	-6.6%	27.5%	45.21	31.05	39.69	40.17	1.2%	29.4%	0.60	0.65	0.60
Humanities	44.70	56.70	78.40	74.70	-4.7%	31.7%	30.20	39.38	35.16	29.88	-15.0%	-24.1%	1.44	2.23	2.50
Math	340.03	384.93	385.80	436.53	13.1%	13.4%	34.70	34.40	33.03	35.81	8.4%	4.1%	11.19	11.68	12.19
Music	11.73	13.17	17.53	17.77	1.4%	34.9%	8.20	6.46	9.74	13.67	40.3%	111.6%	2.04	1.80	1.30
Philosophy	70.10	66.90	66.90	54.50	-18.5%	-18.5%	37.49	39.12	37.17	34.06	-8.4%	-12.9%	1.71	1.80	1.60
Physical Ed./Health	65.27	82.80	90.50	101.73	12.4%	22.9%	25.01	21.56	26.85	27.27	1.6%	26.5%	3.84	3.37	3.73
Phy Ed	26.17	29.40	28.07	31.40	11.9%	6.8%	14.46	12.93	14.93	18.47	23.7%	42.9%	2.27	1.88	1.70
Health	39.10	53.40	62.43	70.33	12.7%	31.7%	30.47	34.09	41.90	34.65	-17.3%	1.6%	1.57	1.49	2.03
Physics	47.17	39.13	37.27	35.57	-4.6%	-9.1%	31.87	28.15	31.85	27.36	-14.1%	-2.8%	1.39	1.17	1.30
Psychology	133.67	129.10	125.57	133.03	5.9%	3.0%	35.36	33.10	43.00	40.68	-5.4%	22.9%	3.90	2.92	3.27
Reading	76.77	72.77	75.00	47.50	-36.7%	-34.7%	20.69	20.38	22.52	20.21	-10.2%	-0.8%	3.57	3.33	2.35
Sociology	84.30	108.60	100.90	134.00	32.8%	23.4%	33.19	33.62	33.19	36.22	9.1%	7.7%	3.23	3.04	3.70
Spanish	27.73	28.83	26.27	28.27	7.6%	-1.9%	17.55	22.88	19.75	35.34	78.9%	54.4%	1.26	1.33	0.80
Study Skills	4.30	2.60		4.30	100.0%	65.4%	22.00	26.00		21.50	100.0%	-17.3%	0.04		0.20
Theater	0.27	0.13	0.03	0.10	233.3%	-23.1%	8.00	12.12	1.00	10.00	900.0%	-17.5%	0.01	0.03	0.01

Source: MnSCU ISRS Operational Data

Table 20
On-line Course Offerings by Fiscal Year

	2007	2008	2009	2010	2011
Unduplicated Headcount	3,394	3,637	3,994	4,160	4,080
Duplicated Headcount	7,857	8,482	9,633	10,499	10,717
Number of Courses Offered	221	240	275	279	291
Number of Sections Offered	303	330	390	407	416
FYE	762	806	898	977	998
Percent of Total FYE	23%	24%	25%	27%	32%

Source: MnSCU ISRS Operational Data and ITS Management Reports/Distance Learning/Internet Courses

Table 21
Fall Term Online Students by State - Five Year Comparison

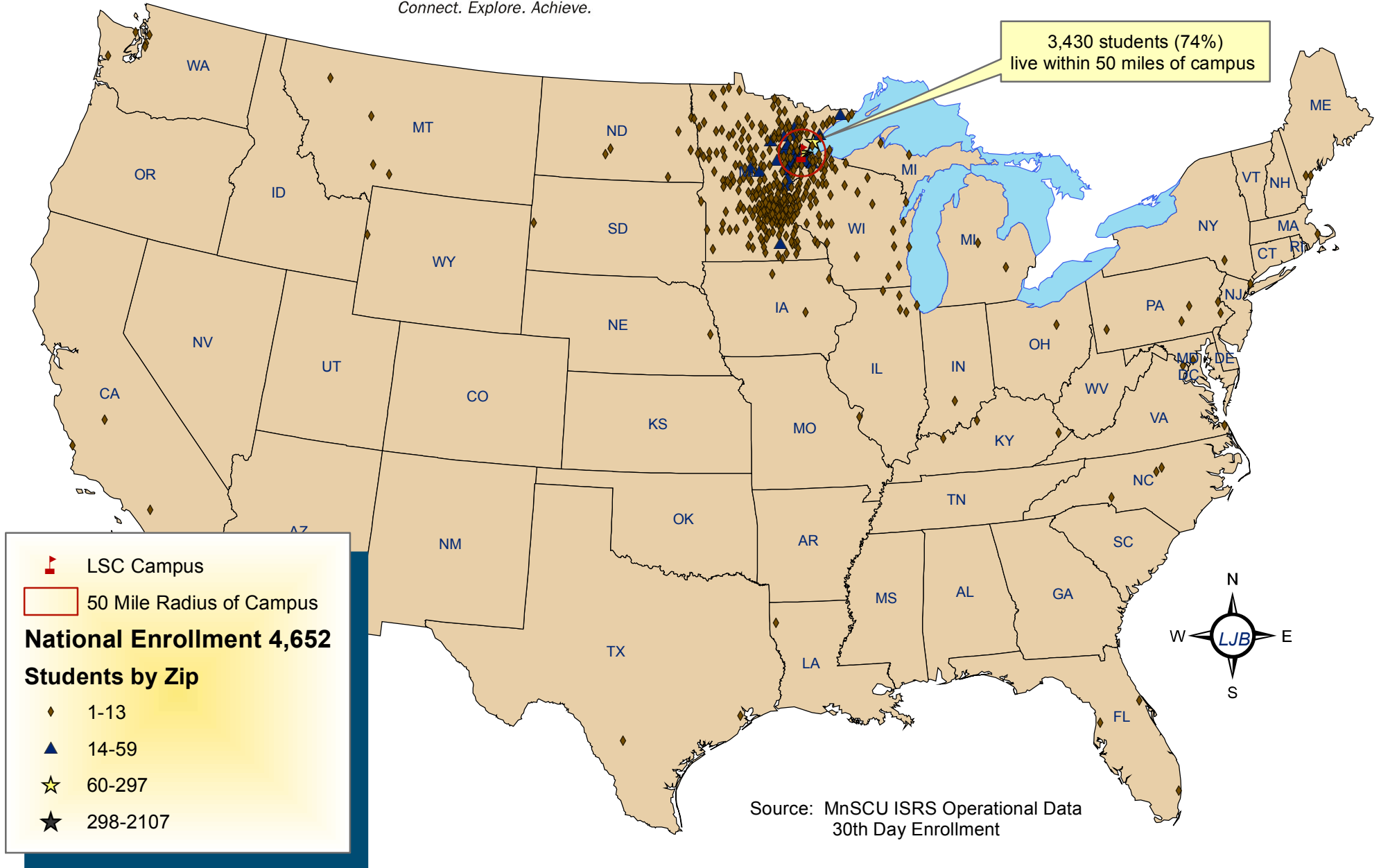
State	Fall 2007		Fall 2008		Fall 2009		Fall 2010		Fall 2011	
	Count	Percent	Count	Percent	Count	Percent	Count	Percent	Count	Percent
MN	1777	84.2%	1784	84.79%	1828	83.78%	1993	85.98%	1939	86.14%
WI	190	9.0%	217	10.31%	228	10.45%	228	9.84%	234	10.40%
ND	10	0.5%	8	0.38%	8	0.37%	6	0.26%	9	0.40%
CA	3	0.1%	4	0.19%	3	0.14%	2	0.09%	4	0.18%
WA	1	0.0%		0.00%	1	0.05%	1	0.04%	4	0.18%
FL	3	0.1%	5	0.24%	4	0.18%	3	0.13%	3	0.13%
IL	3	0.1%	4	0.19%	1	0.05%	2	0.09%	3	0.13%
KY		0.0%	1	0.05%	2	0.09%	2	0.09%	3	0.13%
MI	8	0.4%	4	0.19%	8	0.37%	8	0.35%	3	0.13%
MT	3	0.1%		0.00%	2	0.09%	3	0.13%	3	0.13%
NC	4	0.2%		0.00%		0.00%	2	0.09%	3	0.13%
PA		0.0%		0.00%	3	0.14%	3	0.13%	3	0.13%
VA	5	0.2%	3	0.14%	2	0.09%	3	0.13%	3	0.13%
IA	1	0.0%		0.00%	4	0.18%	2	0.09%	2	0.09%
NY	1	0.0%	3	0.14%	3	0.14%		0.00%	2	0.09%
SD	3	0.1%	4	0.19%	1	0.05%	3	0.13%	2	0.09%
TX	6	0.3%	5	0.24%	4	0.18%	2	0.09%	2	0.09%
CO	7	0.3%	3	0.14%	8	0.37%	3	0.13%	1	0.04%
GA		0.0%	1	0.05%	2	0.09%	2	0.09%	1	0.04%
IN	1	0.0%		0.00%	1	0.05%		0.00%	1	0.04%
LA	2	0.1%	1	0.05%	1	0.05%		0.00%	1	0.04%
MD		0.0%		0.00%		0.00%		0.00%	1	0.04%
MO	2	0.1%		0.00%	2	0.09%	1	0.04%	1	0.04%
NJ		0.0%		0.00%	1	0.05%	1	0.04%	1	0.04%
OH		0.0%	1	0.05%	2	0.09%	1	0.04%	1	0.04%
OR	2	0.1%	3	0.14%		0.00%		0.00%	1	0.04%
TN	1	0.0%	1	0.05%	1	0.05%	1	0.04%	1	0.04%
WY		0.0%		0.00%	1	0.05%	1	0.04%	1	0.04%
AK	1	0.0%	2	0.10%	2	0.09%		0.00%		0.00%
AR	1	0.0%		0.00%		0.00%		0.00%		0.00%
AZ	7	0.3%	3	0.14%	4	0.18%		0.00%		0.00%
DC		0.0%	1	0.05%	1	0.05%		0.00%		0.00%
HI	1	0.0%		0.00%		0.00%		0.00%		0.00%
ID		0.0%		0.00%	1	0.05%	1	0.04%		0.00%
KS	3	0.1%		0.00%	2	0.09%	2	0.09%		0.00%
MA	1	0.0%	1	0.05%	2	0.09%		0.00%		0.00%
NE	1	0.0%	1	0.05%		0.00%	1	0.04%		0.00%
NM		0.0%		0.00%	2	0.09%		0.00%		0.00%
NV	6	0.3%	4	0.19%	2	0.09%	1	0.04%		0.00%
OK		0.0%		0.00%	2	0.09%		0.00%		0.00%
SC	2	0.1%	1	0.05%	1	0.05%	2	0.09%		0.00%
Uncoded	54	2.6%	39	1.85%	42	1.92%	38	1.64%	18	0.80%
Total	2110	100.0%	2104	100.00%	2182	100.00%	2318	100.00%	2251	100.00%

Source: MnSCU ISRS Operational Data / Hyperion ST06 - Students by Course



National Enrollment Fall 2011

Connect. Explore. Achieve.





Regional Enrollment Fall 2011

Connect. Explore. Achieve.

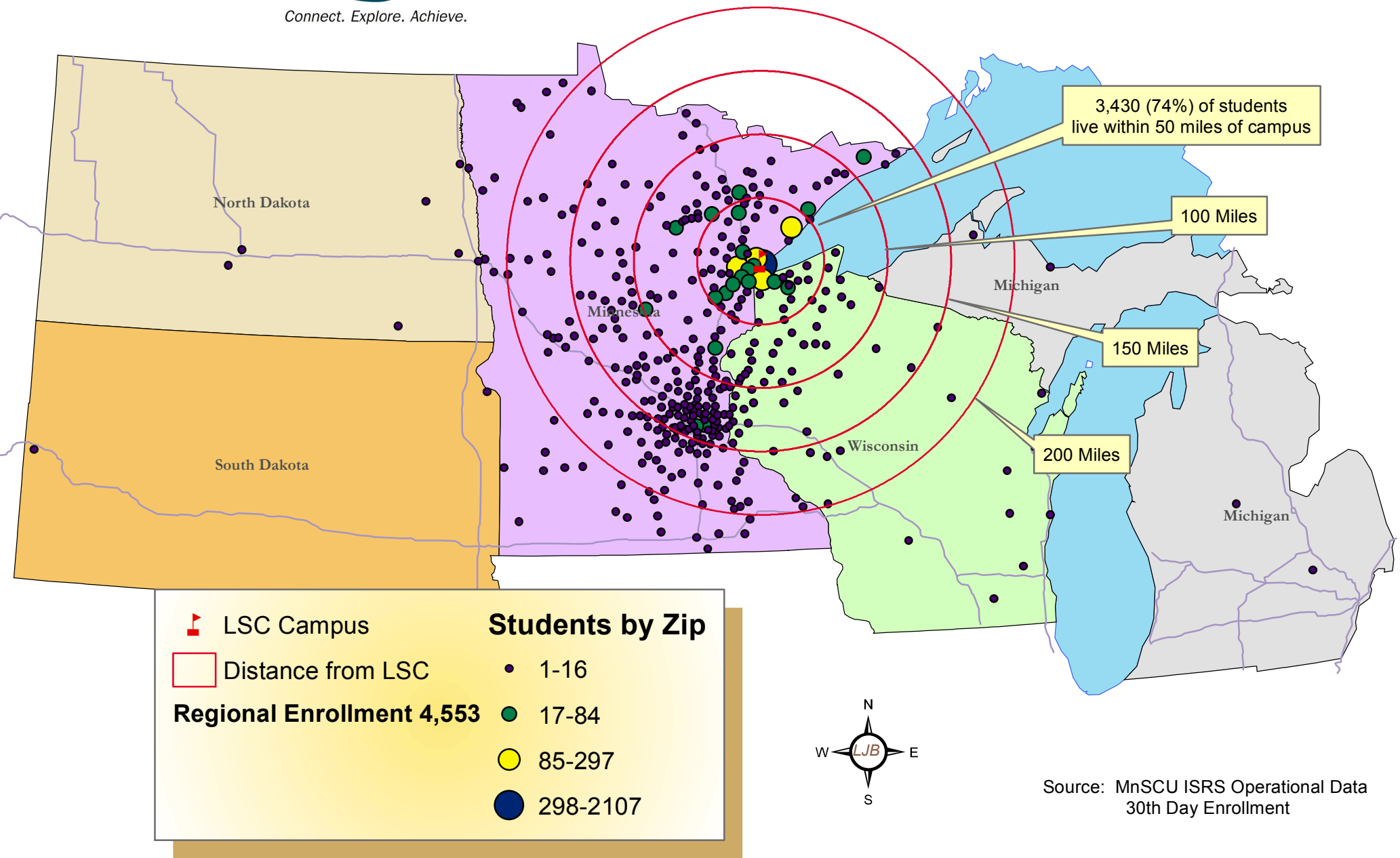


Table 22

Fall Enrollment by Majors - Sorted in Descending Order by Fall 2011

Declared Major	Major ID	Fall 2007		Fall 2008		Fall 2009		Fall 2010		Fall 2011	
		Count	Percent	Count	Percent	Count	Percent	Count	Percent	Count	Percent
Lib Art/Sci	4901	1,271	29.4%	1,309	30.1%	1,324	29.7%	1,412	31.3%	1,453	31.2%
Non-degree seeking		878	20.3%	807	18.6%	776	17.4%	621	13.8%	675	14.5%
Nursing AAS	5204			201	4.6%	297	6.7%	375	8.3%	533	11.5%
Rad Tech	5207	121	2.8%	133	3.1%	112	2.5%	111	2.5%	161	3.5%
Business Adm	1549	78	1.8%	70	1.6%	104	2.3%	112	2.5%	112	2.4%
Fire Tec	5507	121	2.8%	127	2.9%	162	3.6%	123	2.7%	106	2.3%
Phy Ther Ast	5219	60	1.4%	74	1.7%	67	1.5%	80	1.8%	104	2.2%
Accountant	0530	93	2.2%	78	1.8%	74	1.7%	83	1.8%	102	2.2%
Dental Hyg	1213	122	2.8%	85	2.0%	106	2.4%	104	2.3%	100	2.1%
Prac Nurs	5209	326	7.5%	208	4.8%	95	2.1%	98	2.2%	79	1.7%
PNMobility	5208					154	3.5%	135	3.0%	65	1.4%
Med Lab Tech	5205	27	0.6%	33	0.8%	37	0.8%	43	1.0%	58	1.2%
ITSpecNetAD	5601					37	0.8%	54	1.2%	57	1.2%
Surg Tec AAS	5213	51	1.2%	54	1.2%	63	1.4%	73	1.6%	52	1.1%
Sonography	5200	84	1.9%	92	2.1%	89	2.0%	85	1.9%	51	1.1%
Resp Therapy	5215					52	1.2%	60	1.3%	51	1.1%
Com Res Wir	5055	49	1.1%	48	1.1%	56	1.3%	41	0.9%	48	1.0%
ET-Ind Cont	5310					50	1.1%	64	1.4%	46	1.0%
Med Assistin	5639	28	0.6%	19	0.4%	40	0.9%	58	1.3%	45	1.0%
IMFG-Welding	6109					54	1.2%	37	0.8%	45	1.0%
Civ Eng Tec	5309	28	0.6%	35	0.8%	42	0.9%	45	1.0%	41	0.9%
As Fine Arts	4904	20	0.5%	28	0.6%	20	0.4%	33	0.7%	41	0.9%
Auto Serv	5306	33	0.8%	37	0.9%	35	0.8%	31	0.7%	41	0.9%
Prof. Pilot	3001	15	0.3%	14	0.3%	23	0.5%	33	0.7%	38	0.8%
Auto Serv Te	5315	29	0.7%	21	0.5%	20	0.4%	27	0.6%	31	0.7%
Paralegal St	5096	42	1.0%	26	0.6%	32	0.7%	25	0.6%	31	0.7%
Media Study	5089	20	0.5%	25	0.6%	23	0.5%	19	0.4%	30	0.6%
Massage Thrp	5221	36	0.8%	32	0.7%	27	0.6%	17	0.4%	26	0.6%
Auto Body Te	5307	31	0.7%	28	0.6%	26	0.6%	23	0.5%	24	0.5%
CompWebProg	5116	19	0.4%	15	0.3%	26	0.6%	27	0.6%	23	0.5%
PARA LGL AS	5090	7	0.2%	15	0.3%	21	0.5%	25	0.6%	23	0.5%
Bldg Con Dip	5318	23	0.5%	29	0.7%	22	0.5%	21	0.5%	21	0.5%
Med Sec	5095	8	0.2%	10	0.2%	15	0.3%	19	0.4%	20	0.4%
Com Res Wir	5054	19	0.4%	22	0.5%	18	0.4%	14	0.3%	20	0.4%
Assoc Scienc	4907	1	0.0%	7	0.2%	6	0.1%	21	0.5%	19	0.4%
Surg Tech	5214	16	0.4%	10	0.2%	10	0.2%	15	0.3%	19	0.4%
Phlebotomy	8200	22	0.5%	25	0.6%	37	0.8%	35	0.8%	18	0.4%
Pers Trainer	1215	5	0.1%	12	0.3%	15	0.3%	16	0.4%	18	0.4%
Computer Tec	1548	6	0.1%	7	0.2%	15	0.3%	14	0.3%	17	0.4%
Arch Tec	5301	30	0.7%	29	0.7%	27	0.6%	21	0.5%	16	0.3%
Bldg Con	5317	23	0.5%	15	0.3%	25	0.6%	20	0.4%	15	0.3%
IMT-CNC Prog	5394	9	0.2%	9	0.2%	13	0.3%	15	0.3%	14	0.3%
IMT-CAD	5303	15	0.3%	10	0.2%	18	0.4%	26	0.6%	12	0.3%
Adm Off Spec	5064	15	0.3%	12	0.3%	12	0.3%	14	0.3%	12	0.3%
Hlth Ins-Bil	5655	9	0.2%	8	0.2%	11	0.2%	11	0.2%	11	0.2%
Bookkeeper	5669			4	0.1%	14	0.3%	9	0.2%	10	0.2%
Business/Tec	1547	3	0.1%	3	0.1%	7	0.2%	6	0.1%	10	0.2%
Med Sec Dip	5664	6	0.1%	7	0.2%	6	0.1%	14	0.3%	9	0.2%
Hemodialysis	5217	1	0.0%	5	0.1%	9	0.2%	13	0.3%	8	0.2%
Electron Tec	5360	7	0.2%	10	0.2%	8	0.2%	8	0.2%	8	0.2%
AutoBodChass	5223					3	0.1%	6	0.1%	8	0.2%
Metl Arc Wld	8109			3	0.1%	4	0.1%	8	0.2%	7	0.2%

Declared Major	Major ID	Fall 2007		Fall 2008		Fall 2009		Fall 2010		Fall 2011	
		Count	Percent	Count	Percent	Count	Percent	Count	Percent	Count	Percent
IMT-CAD	5308	1	0.0%	1	0.0%			2	0.0%	7	0.2%
IMT-CNC Prog	5393	11	0.3%	16	0.4%	9	0.2%	10	0.2%	5	0.1%
Med Recep	5656	4	0.1%	2	0.0%	7	0.2%	7	0.2%	5	0.1%
ITSpecNetAdm	5604					5	0.1%	6	0.1%	5	0.1%
Paralegal St	5097	10	0.2%	11	0.3%	6	0.1%	5	0.1%	5	0.1%
Med Transcri	5665	14	0.3%	6	0.1%	7	0.2%	6	0.1%	4	0.1%
Prof.Pilot	3000			8	0.2%	7	0.2%	5	0.1%	4	0.1%
ITSpecialist	5114					5	0.1%	3	0.1%	4	0.1%
CmprWebProg	5117	2	0.0%	2	0.0%	1	0.0%	4	0.1%	3	0.1%
Gen Con Wkr	5316									3	0.1%
Office Ass't	5670	2	0.0%	4	0.1%	4	0.1%	9	0.2%	2	0.0%
Civil Dip	5391	3	0.1%	5	0.1%	2	0.0%	8	0.2%	2	0.0%
HPTC-CLN/THE	5220	3	0.1%	5	0.1%	5	0.1%	6	0.1%	2	0.0%
CmprWebProg	5101	4	0.1%	1	0.0%	5	0.1%	4	0.1%	2	0.0%
Arch Tec Dip	5304	7	0.2%	2	0.0%	1	0.0%	4	0.1%	2	0.0%
Leg Sec Cert	5060	1	0.0%	3	0.1%	1	0.0%	3	0.1%	2	0.0%
Inf Proc Ast	5658	5	0.1%	6	0.1%	3	0.1%	3	0.1%	2	0.0%
Office Assis	5005	1	0.0%	2	0.0%			2	0.0%	2	0.0%
AdvInventor	5298					1	0.0%	1	0.0%	2	0.0%
Legal Sec	5662	3	0.1%	2	0.0%	2	0.0%	3	0.1%	1	0.0%
Tung ArcWeld	8108			2	0.0%	4	0.1%	2	0.0%	1	0.0%
Mn Tran Curr	4993			10	0.2%	3	0.1%	1	0.0%	1	0.0%
Inf Sys Prog	5103	7	0.2%	6	0.1%					1	0.0%
Msoft System Adm	8115									1	0.0%
Sup Mgmt	5092	14	0.3%	17	0.4%	11	0.2%	5	0.1%	0	0.0%
EngrCADTech	5299					1	0.0%	3	0.1%	0	0.0%
SolidwksCAD	5028	1	0.0%	1	0.0%	3	0.1%	2	0.0%	0	0.0%
INMFMANMACH	5120	1	0.0%			3	0.1%	2	0.0%	0	0.0%
INTEG MFG CN	5392							2	0.0%	0	0.0%
Management	5049	3	0.1%	6	0.1%	2	0.0%	1	0.0%	0	0.0%
Avia Mgt	5302	1	0.0%	1	0.0%	1	0.0%	1	0.0%	0	0.0%
Brake/Suspen	5324	1	0.0%			1	0.0%	1	0.0%	0	0.0%
Basic Electn	5677					1	0.0%	1	0.0%	0	0.0%
PC Support	8711					1	0.0%	1	0.0%	0	0.0%
Leadership	9098	1	0.0%	1	0.0%	1	0.0%	1	0.0%	0	0.0%
Perf Improv	9099	2	0.0%			1	0.0%	1	0.0%	0	0.0%
Wldrns Pilot	3002	1	0.0%	2	0.0%						0.0%
Rad Tec	4207										0.0%
PARA PROF ED	4910	1	0.0%								0.0%
Undecided	4999	1	0.0%								0.0%
Marketing	5048	6	0.1%	7	0.2%	1	0.0%				0.0%
Sales Mktg	5051	3	0.1%								0.0%
Broadcasting	5088	1	0.0%								0.0%
Leg Ad Assit	5094	5	0.1%	2	0.0%						0.0%
SupMgtTecPrf	5099	8	0.2%	3	0.1%	3	0.1%				0.0%
Mic Supp	5106	1	0.0%								0.0%
CISCO	5108	3	0.1%								0.0%
Int Mfg Tec	5109	17	0.4%								0.0%
InfTecSpnNA	5114	6	0.1%	5	0.1%						0.0%
Nursing	5208	207	4.8%	209	4.8%						0.0%
Occ Ther Ast	5210										0.0%
Nurse Assist	5211	1	0.0%			1	0.0%				0.0%
Resp Care	5215	44	1.0%	45	1.0%						0.0%
Gerontology	5216			1	0.0%						0.0%

Declared Major	Major ID	Fall 2007		Fall 2008		Fall 2009		Fall 2010		Fall 2011	
		Count	Percent	Count	Percent	Count	Percent	Count	Percent	Count	Percent
Entrepreneur	5256	2	0.0%	2	0.0%						0.0%
EET-Ind Cont	5310	44	1.0%	57	1.3%						0.0%
EET-Comp Sup	5313	4	0.1%	2	0.0%						0.0%
EET-Wireless	5314	6	0.1%	3	0.1%						0.0%
Pwr Limited	5325	4	0.1%	3	0.1%	1	0.0%				0.0%
InfTecSpec	5601	33	0.8%	22	0.5%						0.0%
InfTecSpNA	5604			1	0.0%						0.0%
Sal Mktg Dip	5622										0.0%
Prof Bkpr	5669	7	0.2%								0.0%
IMT-MTO	5690	1	0.0%	2	0.0%						0.0%
IMT-Mld/Tool	5692	1	0.0%	5	0.1%	2	0.0%				0.0%
Prf Sls Rep	8052	1	0.0%								0.0%
Co Lit PC Tc	8711			1	0.0%						0.0%
Hum Res Mgmng	9097										0.0%
Co Serv Tec	9109	1	0.0%	1	0.0%						0.0%
Quality	9316			1	0.0%	3	0.1%				0.0%
Total		4,318	100.0%	4,345	100.0%	4,454	100.0%	4,515	100.0%	4,652	100.0%

Source: 30th Day Enrollment Tables/MnSCU ISRS Operational Data/ST Term Data and Major

Chart 1
Fall to Following Fall Retention
for New Full-time Students

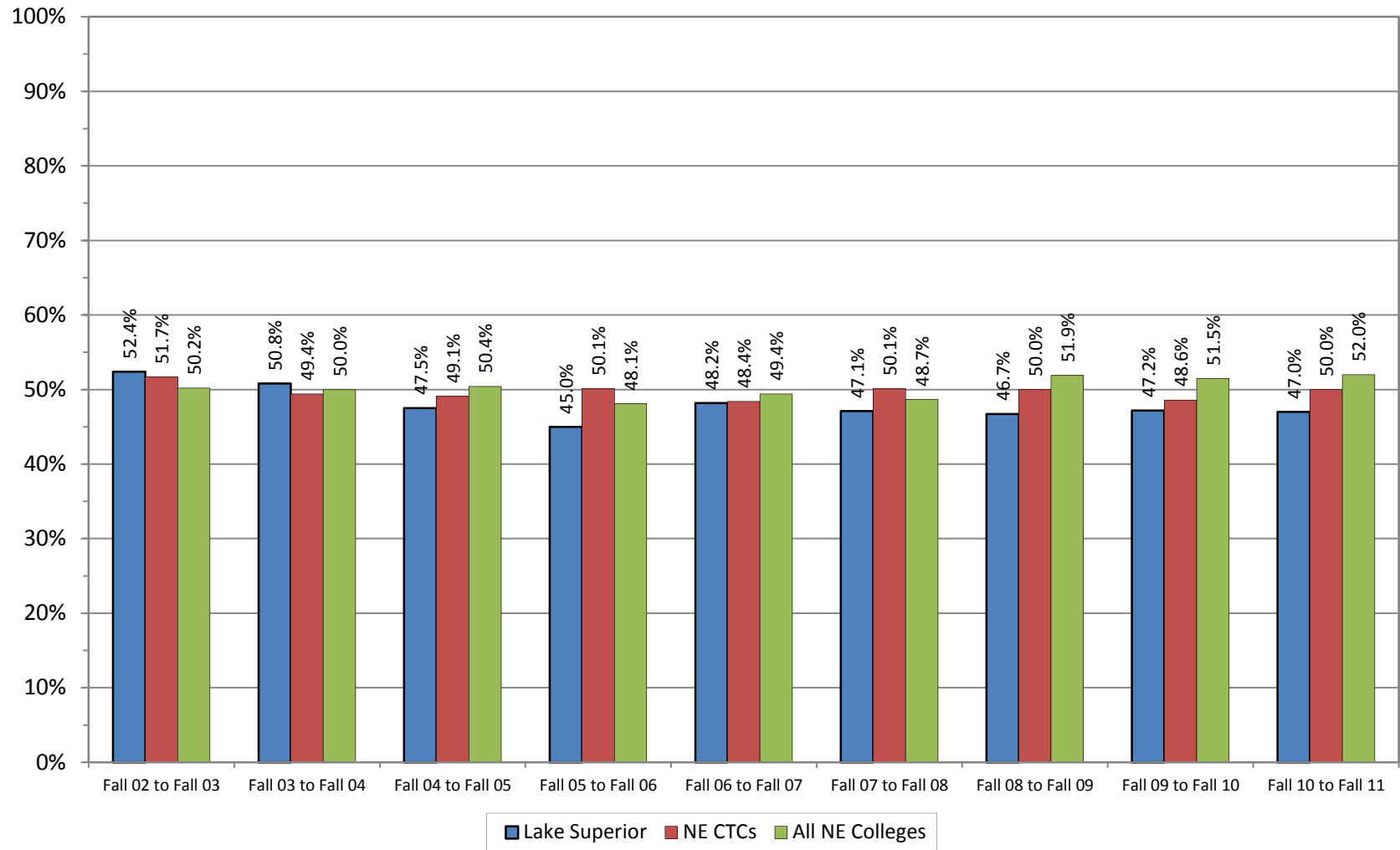


Table 23
Lake Superior College
Retention and Success Rates for Fall Full-time Students
Fall 2008

	Fall 2008 Entering Cohort	First Spring Retention Rate	First Spring Success Rate	Second Fall Retention Rate	Second Fall Success Rate	Second Spring Retention Rate	Second Spring Success Rate	Third Fall Retention Rate	Third Fall Success Rate	Third Spring Retention Rate	Third Spring Success Rate
Gender											
Female	396	83%	90%	49%	78%	40%	75%	16%	74%	13%	74%
Male	486	80%	84%	45%	62%	42%	63%	20%	61%	14%	59%
Unknown	4	75%	75%	50%	75%	25%	75%		75%		75%
Ethnicity											
American Indian or Alaska Native	(¹)	(¹)	(¹)	(¹)	(¹)	(¹)	(¹)	(¹)	(¹)	(¹)	(¹)
Asian	(¹)	(¹)	(¹)	(¹)	(¹)	(¹)	(¹)	(¹)	(¹)	(¹)	(¹)
Black or African American	18	72%	72%	44%	61%	33%	56%	(¹)	56%	(¹)	61%
Hispanic	17	76%	(¹)	41%	71%	47%	71%	(¹)	53%	(¹)	59%
White	777	82%	88%	48%	71%	42%	70%	19%	69%	14%	68%
Two or more races	47	77%	85%	32%	55%	28%	55%	13%	51%	11%	51%
Unknown	8	88%	88%	38%	50%	38%	50%		50%		63%
Agegroup											
<= 18	381	86%	90%	47%	69%	43%	70%	21%	66%	15%	66%
19-20	244	78%	85%	46%	72%	37%	68%	18%	69%	13%	68%
21-24	127	84%	86%	51%	68%	45%	67%	17%	67%	13%	65%
25-34	87	76%	82%	45%	70%	38%	66%	16%	63%	10%	63%
35-44	30	57%	67%	37%	60%	37%	63%	10%	60%	10%	60%
45-54	(¹)	(¹)	(¹)	(¹)	(¹)	(¹)	(¹)	(¹)	(¹)	(¹)	(¹)
>54	(¹)	(¹)	(¹)	(¹)	(¹)	(¹)	(¹)	(¹)	(¹)	(¹)	(¹)
Unknown	2	100%	100%	50%	50%		50%		50%		50%
Admission Status											
Undergrad Regular	553	82%	85%	44%	62%	39%	61%	20%	59%	15%	58%
Undergrad Transfer	281	83%	91%	55%	84%	46%	83%	16%	82%	11%	81%
High School	32	88%	91%	44%	75%	44%	75%	9%	63%	9%	63%
Other Undergrad	20	35%	50%	15%	50%	10%	60%	15%	70%	15%	75%
Total	886	81%	87%	47%	70%	41%	68%	18%	67%	13%	66%

¹ Suppressed to protect student privacy

Success Rate is based on Retention, Transfer, and Graduation combined.

Source: MnSCU ISRS Operational Data / Student Persistence and Completion Analytic Tool

Table 24
Lake Superior College
Retention and Success Rates for Fall Full-time Students
Fall 2009

	Fall 2009 Entering Cohort	First Spring Retention Rate	First Spring Success Rate	Second Fall Retention Rate	Second Fall Success Rate	Second Spring Retention Rate	Second Spring Success Rate	Third Fall Retention Rate	Third Fall Success Rate
Gender									
Female	419	80%	89%	46%	78%	39%	74%	23%	72%
Male	475	82%	86%	47%	64%	42%	63%	18%	60%
Unknown	4	100%	100%	100%	100%	100%	100%	25%	100%
Ethnicity									
American Indian or Alaska Native	(¹)	(¹)	(¹)	(¹)	(¹)	(¹)	(¹)	(¹)	(¹)
Asian	(¹)	(¹)	(¹)	(¹)	(¹)	(¹)	(¹)	(¹)	(¹)
Black or African American	22	68%	73%	55%	64%	36%	55%	14%	59%
Hispanic	20	(¹)	(¹)	60%	70%	50%	70%	30%	80%
White	769	82%	89%	47%	71%	41%	70%	21%	67%
Two or more races	29	72%	79%	31%	48%	24%	41%	(¹)	48%
Unknown	38	79%	87%	61%	82%	55%	76%	18%	58%
Agegroup									
<=18	321	84%	90%	51%	71%	46%	71%	22%	66%
19-20	240	80%	87%	45%	72%	37%	66%	22%	68%
21-24	151	78%	84%	41%	66%	36%	65%	18%	62%
35-34	112	78%	85%	51%	65%	44%	64%	19%	63%
35-44	39	77%	92%	49%	85%	41%	85%	15%	72%
45-54	(¹)	(¹)	(¹)	(¹)	(¹)	(¹)	(¹)	(¹)	(¹)
> 54	(¹)	(¹)	(¹)	(¹)	(¹)	(¹)	(¹)	(¹)	(¹)
Unknown	2	100%	100%	50%	100%	50%	100%		100%
Admission Status									
Undergrad Regular	550	82%	87%	49%	66%	43%	64%	24%	60%
Undergrad Transfer	294	82%	90%	47%	78%	38%	75%	15%	76%
High School	32	84%	91%	38%	75%	38%	81%	13%	66%
Other Undergrad	22	32%	73%	9%	73%	9%	82%	4%	82%
Total	898	81%	88%	47%	70%	41%	68%	20%	66%

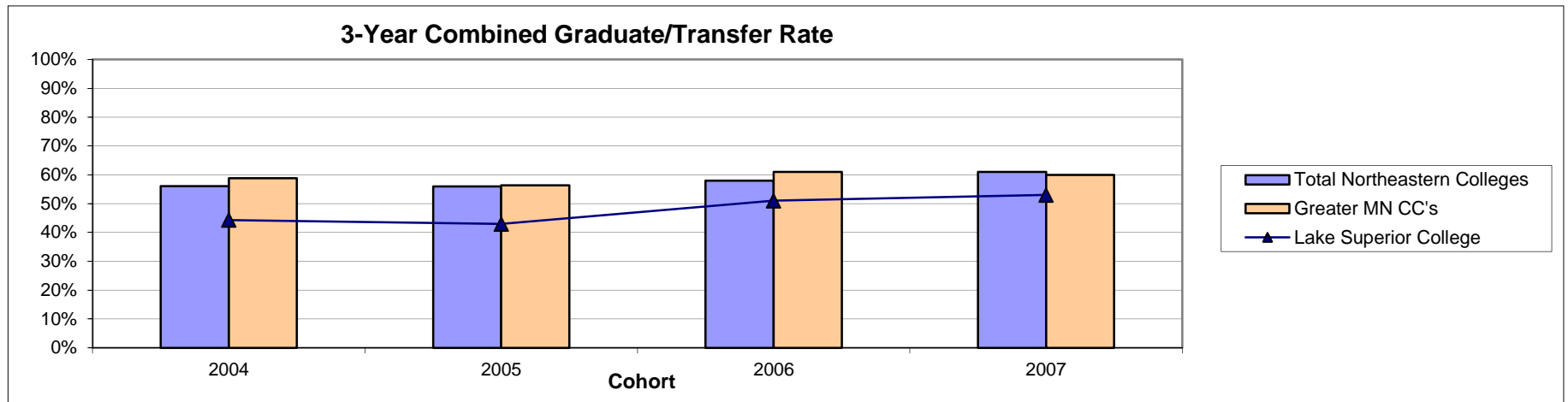
¹ Suppressed to protect student privacy

Success Rate is based on Retention, Transfer, and Graduation combined.

Source: MnSCU ISRS Operational Data / Student Persistence and Completion Analytic Tool

Table 25
2007, 2008, 2009, and 2010 IPEDS Graduation and Transfer-out Rates
 Fall 2004, Fall 2005, Fall 2006, and Fall 2007 First-time, Full-time, Degree Seeking Students

COLLEGE	Cohort				3-Year Graduation Rate				Transfer Rate				Combined Grad/Trans Rate				
	Cohort	2004	2005	2006	2007	2004	2005	2006	2007	2004	2005	2006	2007	2004	2005	2006	2007
Lake Superior College		578	454	476	540	19%	21%	25%	24%	25%	22%	26%	29%	44%	43%	51%	53%
Fond du Lac Tribal & CC		178	177	135	162	17%	25%	28%	20%	25%	18%	17%	21%	42%	43%	45%	41%
Hibbing Community College		476	344	314	305	37%	42%	30%	32%	26%	22%	26%	20%	63%	64%	56%	52%
Itasca Community College		327	271	304	302	37%	34%	35%	35%	24%	21%	33%	26%	62%	55%	68%	62%
Mesabi Range CTC		343	264	253	280	39%	45%	44%	43%	20%	19%	19%	18%	59%	64%	63%	60%
Rainy River Community College		129	95	106	102	26%	25%	21%	31%	36%	42%	36%	43%	63%	67%	57%	75%
Vermilion Community College		200	195	181	175	34%	19%	29%	23%	33%	46%	36%	43%	66%	65%	65%	66%
Total Northeastern Colleges		2,231	1,800	1,769	1,866	30%	31%	31%	34%	26%	24%	27%	27%	56%	56%	58%	61%
Metro CC's		4,362	3,668	3,759	3,830	14%	14%	13%	15%	39%	38%	41%	38%	53%	52%	54%	54%
Metro CTC's		3,049	2,186	2,385	2,579	22%	15%	15%	15%	24%	25%	26%	26%	46%	40%	40%	42%
Metro TC's		1,905	1,419	1,254	1,272	38%	35%	30%	30%	14%	14%	17%	19%	53%	49%	47%	49%
Greater MN CC's		834	738	726	741	31%	27%	30%	28%	28%	29%	31%	31%	59%	56%	61%	60%
Greater MN CTC's		7,276	6,444	6,649	6,666	36%	36%	35%	33%	20%	19%	20%	20%	56%	56%	55%	53%
Greater MN TC's		2,804	2,340	1,815	1,921	45%	39%	41%	40%	17%	19%	21%	21%	61%	58%	62%	61%
Total Colleges		20,230	16,795	16,588	17,009	30%	29%	27%	27%	24%	24%	26%	26%	55%	53%	53%	52%

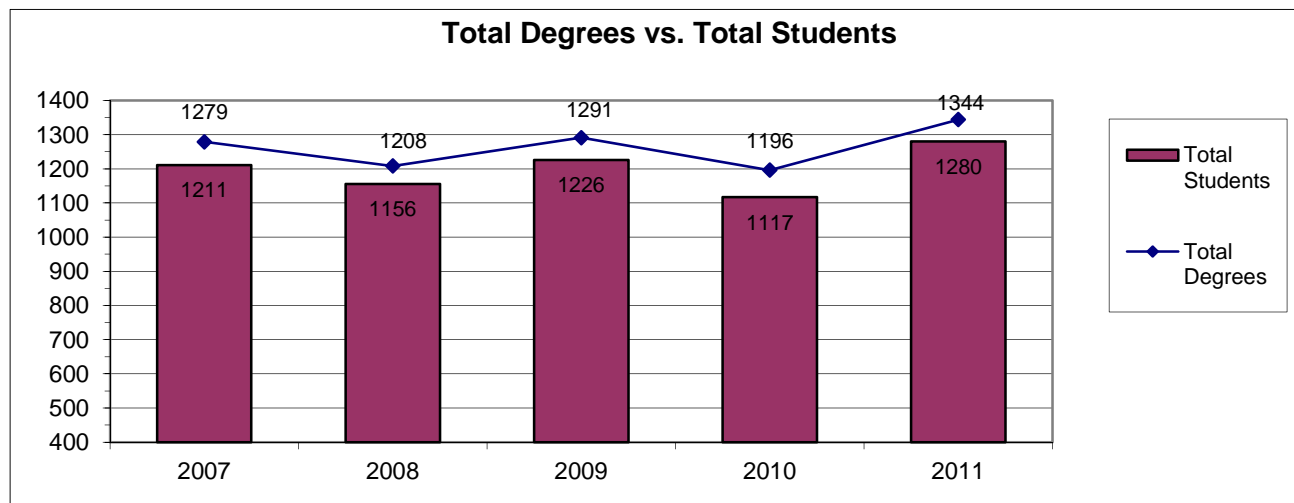
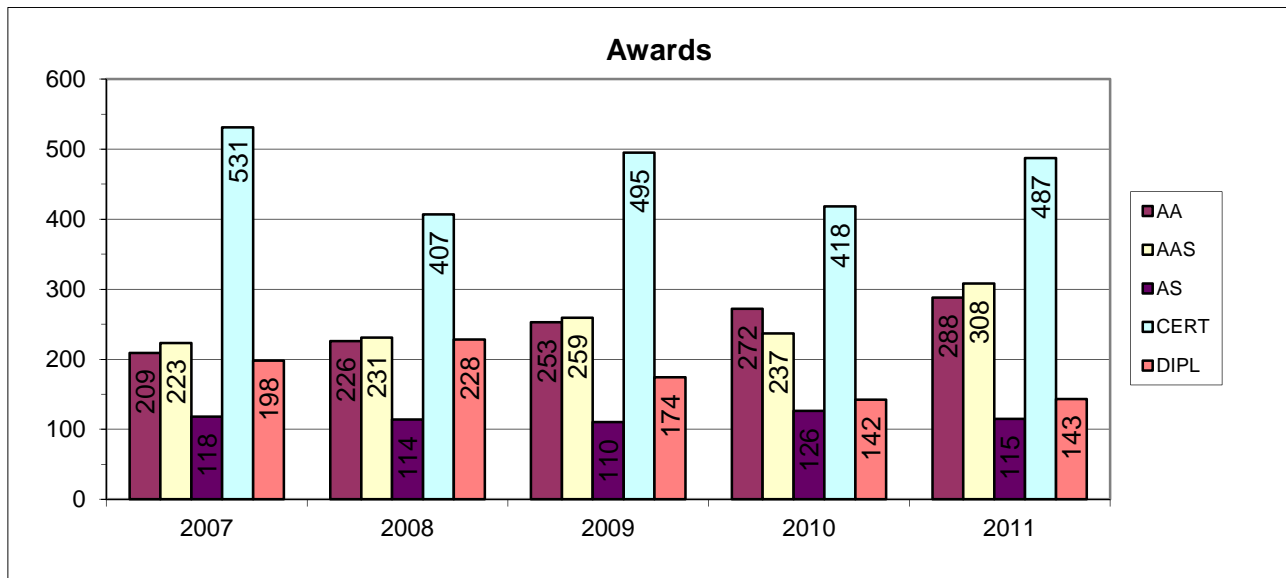


Source: Office of the Chancellor Research and Planning, Feb. 2012

**Table 26
Awards - FY 2007-2011**

	2007		2008		2009		2010		2011	
	Number	Percent	Number	Percent	Number	Percent	Number	Percent	Number	Percent
AA	209	16%	226	19%	253	20%	272	21%	288	22%
AAS	223	17%	231	19%	259	20%	237	18%	308	24%
AS	118	9%	114	9%	110	9%	126	10%	115	9%
AFA			2			0%	1	0%	3	0%
CERT	531	42%	407	34%	495	38%	418	32%	487	38%
DIPL	198	15%	228	19%	174	13%	142	11%	143	11%
Total Degrees	1279		1208		1291		1196	93%	1344	104%
Total Students	1211		1156		1226		1117		1280	

Source: ITS Management Reports/Academic/Awards Granted, 12/07/11



**Table 27
Status of Graduates Summary**

	Total Graduates	Related Work Full-time	Related Work Part-time	Related Employment Rate	Continuing Education Count	Continuing Education %	Unrelated Work Seeking Related	Available for Work but Unemployed	Unrelated Work Not Seeking Related	Unavailable for Work	Status Unknown	Total Related Work	Total Available for Related Work
2000	516	253	75	96%	110	21%	7	6	7	23	50	328	341
2001	560	223	94	94%	115	21%	16	6	25	26	67	317	339
2002	609	219	88	95%	170	28%	12	4	22	41	82	307	323
2003	651	215	105	97%	223	34%	5	6	11	55	70	320	331
2004	760	274	105	95%	242	32%	7	11	14	47	88	379	397
2005	833	307	124	96%	254	30%	12	5	30	11	90	431	448
2006	1211	339	246	99%	405	33%	4	4	19	51	168	585	593
2007	1192	291	179	94%	536	45%	17	11	29	127	94	470	498
2008	1213	213	175	91%	527	43%	23	14	26	87	148	388	425
2009	1231	143	113	85%	759	62%	25	21	7	13	150	256	302
2010	1163	183	100	86%	614	53%	16	28	29	25	168	283	327

Source: MnSCU Graduate Follow-up Survey Results

NOTES:

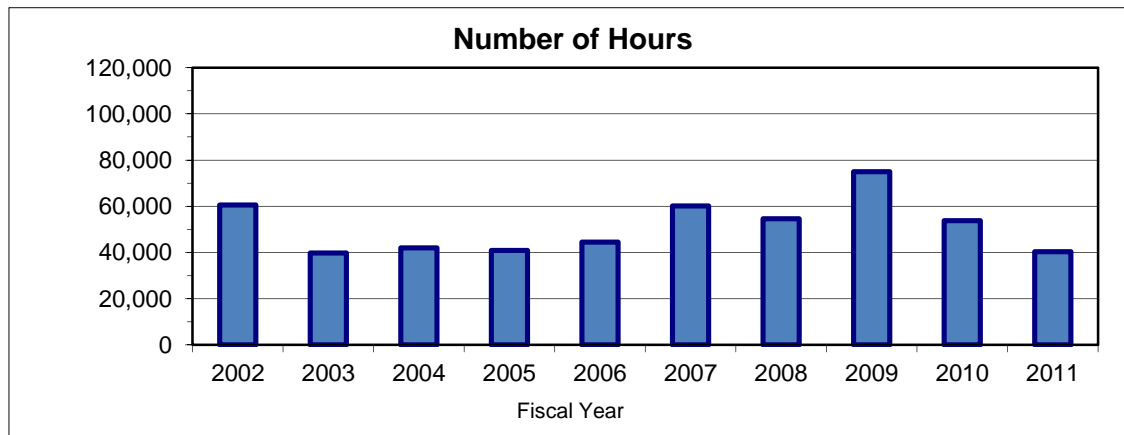
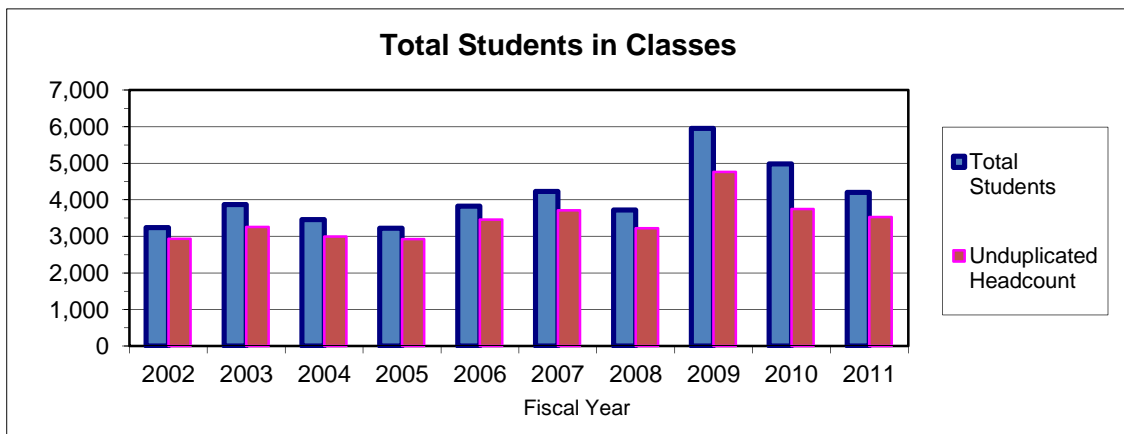
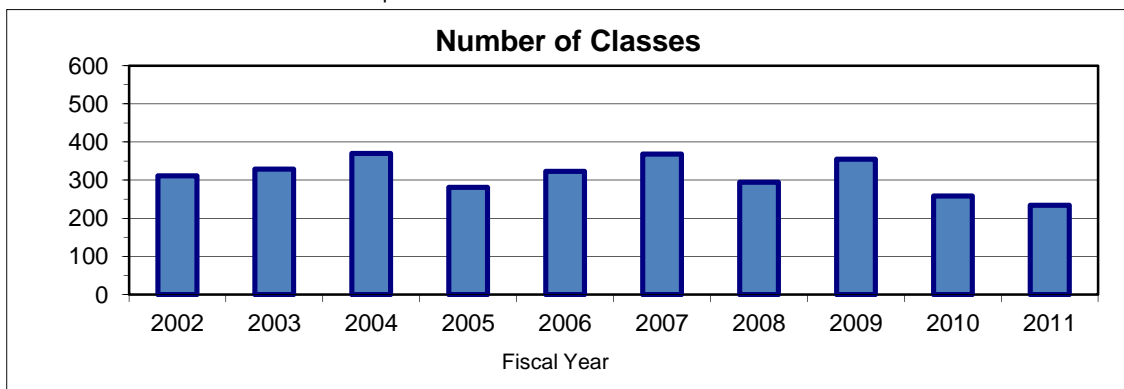
- 1) Caution about the use of data for a program is advisable when the number of graduates is low or the number of "Status Unknown" exceeds 15% of the total graduates.
- 2) Graduates or individuals who know the graduates provided this information, including relatedness of employment to program of study.
- 3) "Related Employment Part-time" includes graduates who reported related employment but did not indicate the number of hours worked per week.
- 4) "Unavailability for Employment" includes graduates who chose not to seek work, were unable to work, or were international students who returned to their homelands.
- 5) "Status Unknown" includes graduates who could not be located or did not respond to requests for information.
- 6) Categories of employment can include some graduates who also reported continuing education but indicated that employment was their preferred classification.
- 7) "Continuing Education" can include some graduates who also reported employment but indicated that continuing education was their preferred classification.
- 8) Information on graduates who both worked and pursued further education is available in supplemental materials.
- 9) Sums of percentages might not equal total percentages due to rounding.
- 10) N/A ("Not Applicable") is displayed in the "Percent of Available" row when there are no graduates available.
- 11) "Related Employment Rate" is based on those in "Related Work Full-time" and "Related Work Part-time" to "Total Available for Related Work."

Report generated: Nov. 2011

Table 28
Continuing Education & Customized Training Enrollment
Non-Credit

Fiscal Year	Number of Classes	Students in Classes	Number of Hours	Unduplicated Headcount
2002	311	3,241	60,550	2,933
2003	329	3,872	39,799	3,258
2004	370	3,460	42,037	2,993
2005	281	3,219	40,833	2,923
2006	323	3,823	44,474	3,463
2007	368	4,230	60,197	3,717
2008	294	3,721	54,607	3,220
2009	355	5,954	74,981	4,761
2010	258	4,978	53,813	3,752
2011	234	4,206	40,278	3,527

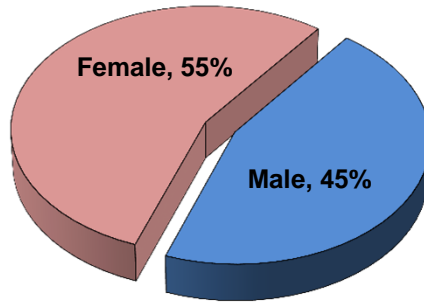
Source: MnSCU ISRS Operational Data



Faculty and Staff

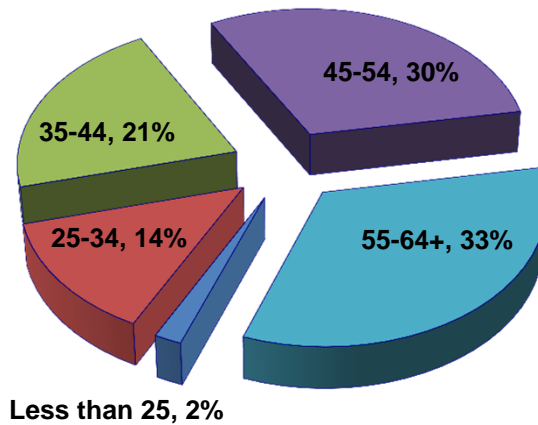
**Table 29
Employee Gender Distribution**

	Count	Percent
Female	296	55%
Male	244	45%
Total	540	



**Table 30
Employee Age Distribution**

	Count	Percent
Less than 25	10	2%
25-34	73	14%
35-44	114	21%
45-54	163	30%
55-64+	180	33%
Total	540	



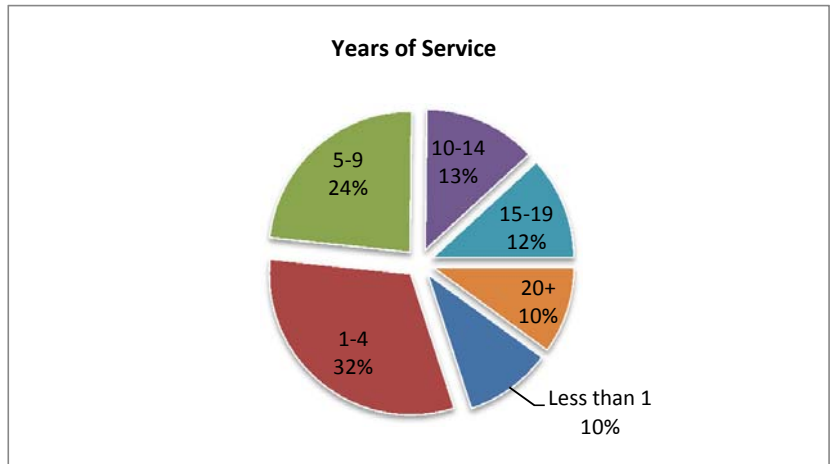
Source: LSC Human Resources Department, 8/7/12

**Table 31
Employee Ethnic Distribution**

	Count	Percent
African American	8	1%
Asian	4	1%
White	510	94%
Hispanic	6	1%
American Indian	6	1%
Unknown	6	1%
Total	540	

**Table 32
Years of Service**

	Count	Percent
Less than 1	54	10%
1-4	171	32%
5-9	127	24%
10-14	70	13%
15-19	64	12%
20+	54	10%
Total	540	

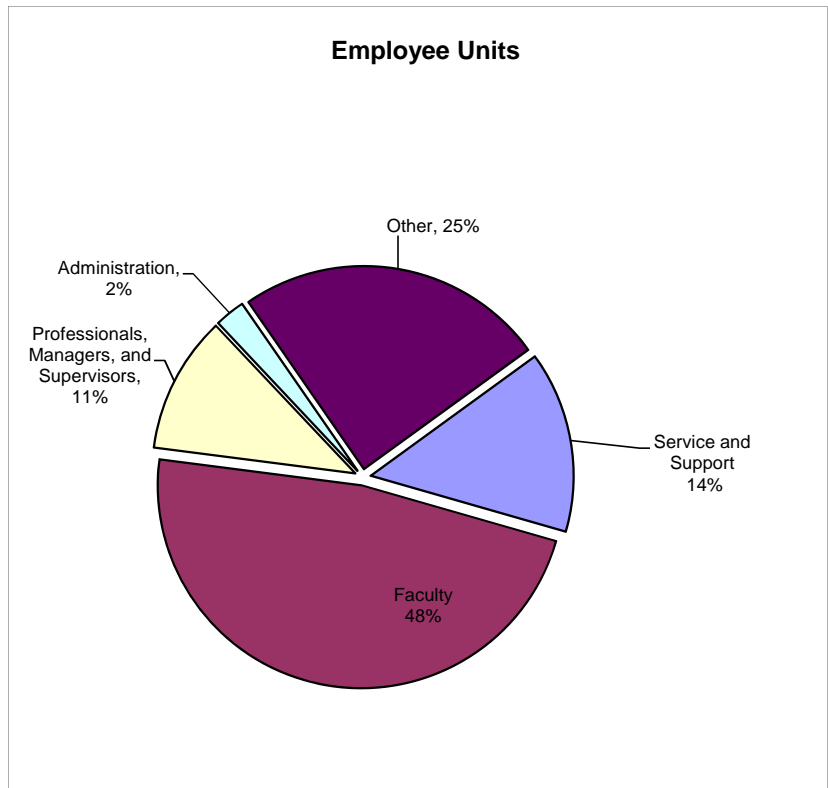


**Table 33
Full-time/Part-time Status**

	Count	Percent
Service and Support		
Full-time	45	58%
Part-time	33	42%
Faculty		
Full-time	101	39%
Part-time	156	61%
Professionals, Managers, and Supervisors		
Full-time	42	71%
Part-time	17	29%
Administration		
Full-time	13	100%
Part-time		0%
Other*		
Full-time		0%
Part-time	133	100%
Total	540	

*Non-unit faculty and staff, and student employees

Source: LSC Human Resources Department, 8/7/12



Regional Population and Employment

Table 34
Population Estimates for Region 3, Counties, and State 2003-2010

	2003	2004	2005	2006	2007	2008	2009	2010*	Change: 2003 to 2010	
									Number	Percent
Aitkin	15,810	16,085	16,216	16,198	16,067	16,054	15,737	16,202	392	2%
Carlton	33,154	33,748	34,096	34,220	33,990	34,128	34,266	35,386	2,232	7%
Cook	5,280	5,316	5,368	5,369	5,356	5,437	5,441	5,176	(104)	-2%
Itasca	44,198	44,242	44,285	44,347	44,278	44,379	44,663	37,816	(6,382)	-14%
Koochiching	13,986	13,832	13,773	13,619	13,506	13,302	13,178	13,311	(675)	-5%
Lake	11,160	11,229	11,189	11,100	11,119	10,970	10,853	10,866	(294)	-3%
St Louis	198,721	198,262	198,102	196,324	196,108	195,797	196,036	200,226	1,505	1%
Region 3	322,309	322,714	323,029	321,177	320,424	320,067	320,174	326,225	3,916	1%
Minnesota	5,088,006	5,145,106	5,205,091	5,231,106	5,263,610	5,287,976	5,300,942	5,303,925	215,919	4%

Source: Department of Administration, Office of Geographic and Demographic Analysis, State Demographic Center

www.demography.state.mn.us/estimates.html

* 2010 is census data

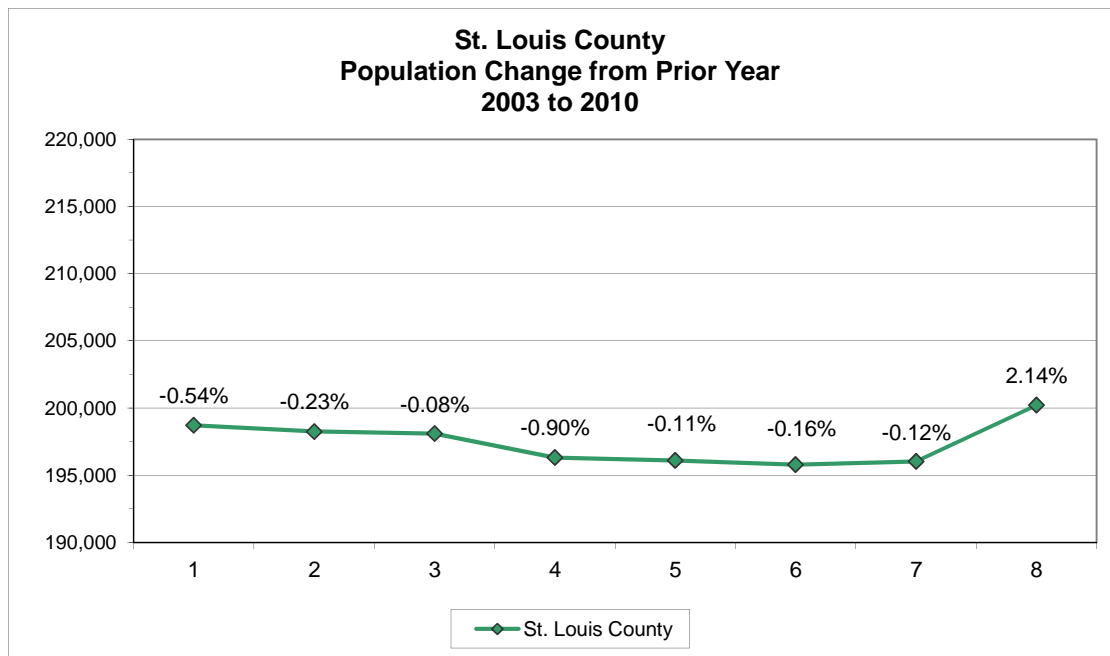
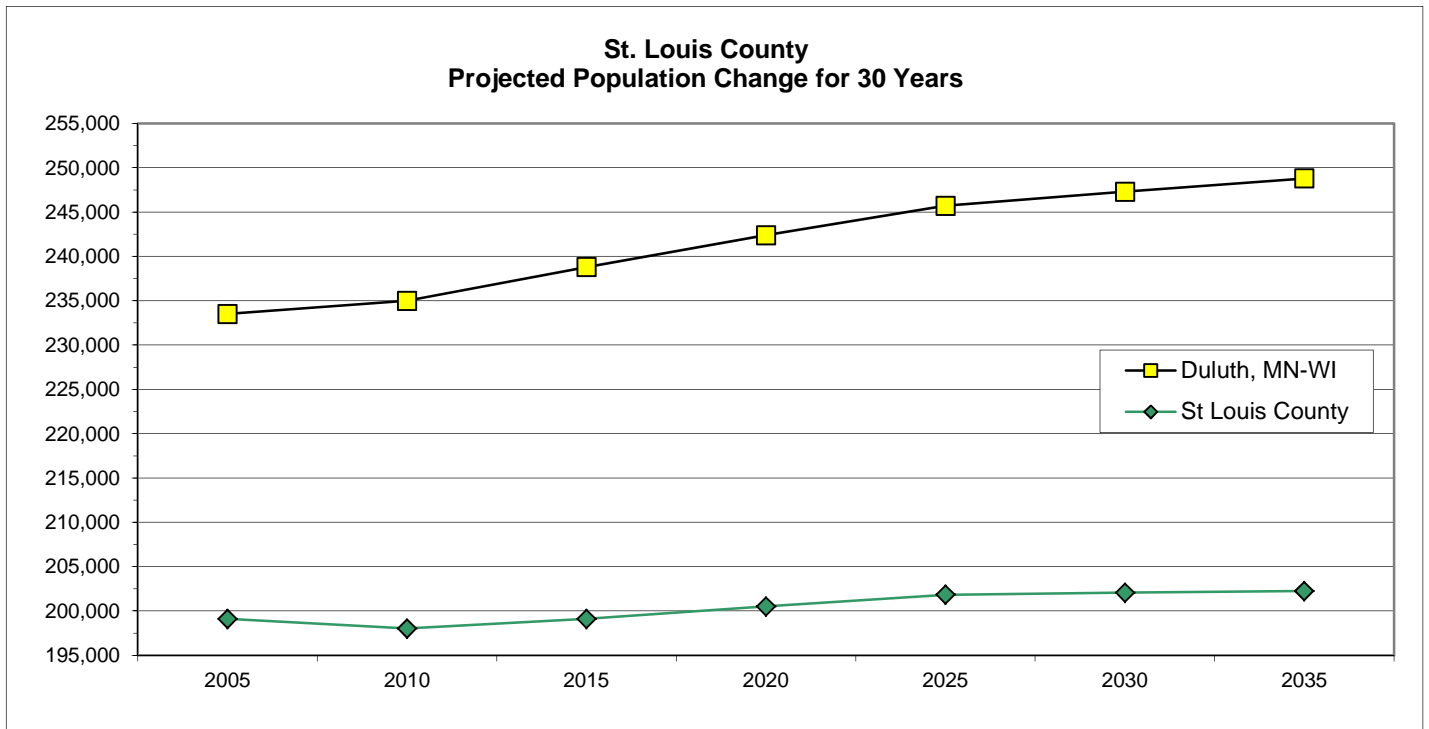


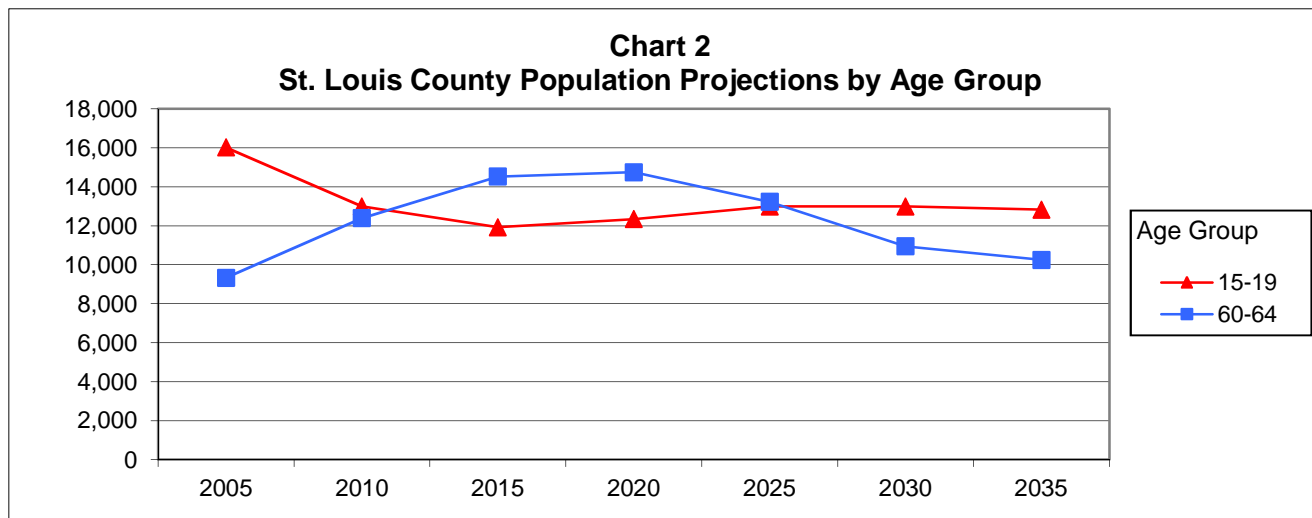
Table 35
Projected 30 Year Population Change for City, County, Region, and State

	2005	2010	2015	2020	2025	2030	2035	2005 - 2015 % Change	2005 - 2035 % Change
Aitkin	16,319	17,050	18,000	18,700	19,010	19,370	19,630	10.3	20.3
Carlton	34,393	36,950	39,630	41,950	43,860	45,300	46,580	15.2	35.4
Cook	5,419	5,570	5,790	6,050	6,280	6,320	6,320	6.8	16.6
Itasca	44,817	45,610	46,700	47,630	48,300	48,470	48,590	4.2	8.4
Koochiching	14,043	13,690	13,520	13,400	13,330	13,150	12,980	-3.7	-7.6
Lake	11,262	11,480	11,770	11,990	12,180	12,230	12,320	4.5	9.4
St Louis County	199,103	198,010	199,120	200,500	201,830	202,050	202,260	0.0%	1.6%
Duluth, MN-WI	233,496	235,000	238,800	242,400	245,700	247,300	248,800	2.3	6.6
Region 3*	325,357	328,400	334,500	340,200	344,800	346,900	348,700	2.8	7.2
Minnesota	5,192,122	5,446,530	5,709,700	5,943,240	6,135,060	6,297,950	6,446,270	10	24.2

Source: Department of Administration, Office of Geographic and Demographic Analysis, State Demographic Center
www.demography.state.mn.us/projections.html (accessed July 2012)

*Projected numbers are rounded to the nearest 10.





Source: Department of Administration, Office of Geographic and Demographic Analysis, State Demographic Center
www.demography.state.mn.us/projections.html (accessed July 2012)

Table 36
2010-11 Enrollment for Area School Districts - K through 12

	ISD # 0709 Duluth	ISD# 0700 Hermantown	ISD #0704 Proctor	ISD # 2142 St. Louis	Total
Kinder	728	139	108	135	1,110
1	653	152	132	139	1,076
2	650	147	148	134	1,079
3	609	150	128	122	1,009
4	649	161	134	149	1,093
5	641	170	143	126	1,080
6	531	164	134	136	965
7	611	178	137	172	1,098
8	577	172	139	142	1,030
9	709	161	133	144	1,147
10	798	169	148	154	1,269
11	810	179	148	156	1,293
12	940	160	131	184	1,415
Total	8,906	2,102	1,763	1,893	14,664

Source: Minnesota Department Education, Student Enrollment 2010-2011
<http://education.state.mn.us/MDEAnalytics/Data.jsp> (accessed July 2012)

Table 37
Area and St. Louis County High School Enrollment

Area High School Enrollment*						
Grade	06-07	07-08	08-09	09-10	09-10	5 Year % Change
Ninth	1,485	1,388	1,332	1,370	1,147	-22.8%
Tenth	1,413	1,447	1,389	1,299	1,269	-10.2%
Eleventh	1,481	1,405	1,421	1,335	1,293	-12.7%
Twelfth	1,552	1,490	1,402	1,468	1,415	-8.8%
Total	5,931	5,730	5,544	1,370	1,147	-80.7%
St. Louis County High School Enrollment**						
Ninth	2,306	2,209	2,073	1,984	1,871	-18.9%
Tenth	2,215	2,263	2,172	2,049	1,964	-11.3%
Eleventh	2,317	2,130	2,181	2,099	2,028	-12.5%
Twelfth	2,321	2,322	2,145	2,245	2,187	-5.8%
Total	9,159	8,924	8,571	8,377	8,050	-12.1%

Source: Minnesota Department Education, Student Enrollment 2010-2011

<http://education.state.mn.us/MDEAnalytics/Data.jsp> (accessed July 2012)

* Includes: Duluth, Hermantown, Proctor, and St. Louis High Schools

** Includes all high school enrollment in St. Louis County "69" (including area schools)

Table 38
St. Louis County Average Unemployment Rate

	City of Duluth	County	Region	MN	US
2001	4.6%	5.8%	5.9%	3.8%	4.7%
2002	5.0%	5.7%	5.8%	4.5%	5.8%
2003	5.5%	6.2%	6.4%	4.9%	6.0%
2004	5.4%	5.8%	6.1%	4.6%	5.5%
2005	5.0%	5.1%	5.4%	4.2%	5.1%
2006	4.8%	5.1%	5.3%	4.1%	4.6%
2007	5.0%	5.6%	5.9%	4.6%	4.6%
2008	5.7%	6.3%	6.6%	5.4%	5.8%
2009	8.0%	9.5%	9.7%	8.1%	9.3%
2010	7.6%	7.9%	8.3%	7.3%	9.6%
2011	6.9%	7.4%	7.7%	6.4%	8.9%

Source: Department of Employment and Economic Development
<http://www.positivelyminnesota.com/apps/lmi/laus/> (accessed July 2012)

