



LSC Emergency Response Training Center Weekend Fire Schools



May
Saturday 3 & Sunday 4, 2008
0800—1700 & 0800—1200

May Course Offerings

NEW! Great Reviews!

www.lsc.edu/ertc

Keep it Local

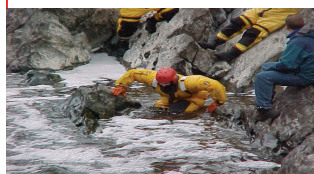
1705 \$85.00
S-131 & S-133
Wildland Firefighter Squad
Boss (12 hours)

Cancelled -
low enrollment



#1618 \$85.00
Introduction to Strategies
and Tactics for Water
Rescue (12 hours)

Cancelled -
low enrollment



#1502 for FF I \$65.00
1512 for FF II
FF I or FF II Certification
Review and Test

Firefighter I or II Certifi-
cation review on Saturday
This course is for firefighters
who are going to take the
certification test on Sunday
and want to refresh their
knowledge and skills prior to
taking the exam.

Firefighter I or II Certifi-
cation test on Sunday

ADDITIONAL PROGRAM
COST:
\$60.00 per participant (send
check directly to certification
board by April 28, 08) See
website below for details and
payment options

Certification Board website:
www.mfscb.org

Full Turnout Gear and
SCBA required. - Must
meet MN-OSHA Stan-
dards



#1205 \$85.00
Rope Rescue – Basic
(12 hours)

Cancelled -
low enrollment



Register Today

www.lsc.edu/ertc
1.800.232.8573 or 218.733.1074 (Laurie)

Keep an eye out for our up
coming weekends.

www.lsc.edu/ertc

September 13 & 14, 2008

- Auto-x Basic
- Auto-x Advanced
- OHV Special Rescue
- Wilderness Rescue
- Tools of the Trades

Course Tuition

\$85.00 for 12 hours
\$65.00 for FFI & FFII

(Breaks and Saturday lunch are
included)

Cancellation Policy

*Students have up to 10 days before the course
date to cancel and get your tuition back minus
\$10.00 for administrative fee. After the 10 days
due to advanced commitments and special
arrangements for instructors, food, and materials,
we cannot issue refunds for tuition. Substitutes are*

Lake Superior College is an equal
opportunity educator. All per-
sons are eligible for enrollment
regardless of race, creed, color,
gender, sexual orientation, na-
tional origin, age, marital status
with regard to public assistance,
religion, or disability.

Persons 62 and older:
MN Statue 136A.81 provides for
exception from tuition for senior
citizens for any course for which
they enroll when space is avail-
able. Laboratory room and
materials fees usually account for
half the cost of the program. A
minimum of 12 fully paid fees
must be received before any
senior discount apply.