



Lake Superior College

Overlooking Lake Superior and nestled inside a 97-acre wooded campus, Lake Superior College (LSC) is dedicated to developing students who will find success in the workplace. Students are taught effective communication and critical thinking skills, which are then applied to real-world situations in a variety of fields including transportation, manufacturing, and health care. LSC collaborates with community partners to assess their needs and then tailors classroom learning experiences to fulfill those needs. By starting at Lake Superior College, students can save thousands when they complete their associate's degree or follow one of the college's transfer pathways.

Contributing to the Minnesota Economy

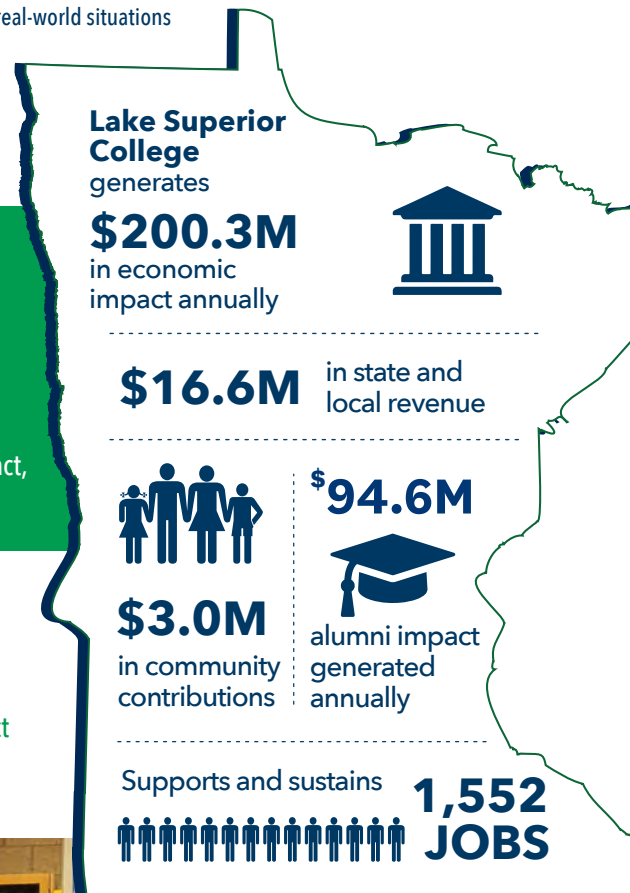
- Lake Superior College generates an annual economic impact of **\$200.3 million**. This includes a direct impact of \$117.7 million and an indirect/induced impact of \$82.5 million.
- Spending on operations and capital projects generates \$66.9 million of the total impact, and student and visitor spending generates \$133.4 million.

Supporting and Sustaining Jobs in the State

- LSC supports and sustains 1,552 Minnesota jobs (1,127 direct and 425 indirect/induced). These jobs are at both institutions and in the community -283 direct jobs are employees of LSC.

Generating Local and State Tax Revenue

- The combined tax impact of LSC, its suppliers, students and visitors is **\$16.6 million**. This includes a direct impact of \$11.6 million and indirect/induced impact of \$5 million.



Alumni in the State Generate Additional Impact

An estimated 25,640 Lake Superior College alumni living and working in Minnesota are continuing to make a positive economic impact after graduation. These graduates are an integral part of the Minnesota workforce, impacting the economy not only through their spending but also through the extra earning power generated by their Lake Superior College degree.

Each year, Lake Superior College alumni generate \$94.6 million in economic impact for Minnesota and support and sustain 504 jobs. Over their 40-year career, Lake Superior College alumni will generate \$3.8 billion in the economy. These impacts are based on the added value of earning a degree from Lake Superior College, not alumni full wages. This impact is based upon the total number of alumni in Minnesota 10 years after graduation.

Making a Difference in the Community and State

Lake Superior College is helping make Duluth a destination worth investing in and laying down lifelong roots. In addition to world-class hiking trails and appealing quality of life, the nationally recognized aviation program attracts students from across the country.

Over the past decade, a nimble approach to programming and workforce development has translated into long-term, corporate investments in Minnesota. To grow its training and maintenance workforce, Delta Air Lines contracts with Lake Superior College. Duluth is now widely considered a hub for training in the aviation field.

By hosting and sponsoring a number of events, Lake Superior College plays an active role in the community. Each year, the college sponsors a golf outing and an annual dinner and community celebration to benefit the Lake Superior College Foundation. The college also sponsors several community events including the Duluth Airshow, the Christmas City of the North Parade, Greater Downtown Council movies in the park and sidewalk days, and Grandma's Marathon, the unofficial kickoff to summer in Duluth.

Lake Superior College faculty, staff, and students make Duluth and Minnesota a better place to live through their environment and charitable giving in the community. Lake Superior College provides access to arts, athletics, and cultural events, and its faculty and staff serve on dozens of local boards and volunteer endeavors. Lake Superior College faculty, staff, and students generated an estimated \$3.0 million in charitable donations and volunteer services.



Lake Superior College Student Profile



5,967
students enrolled in fall 2022



944
graduates each year



28%
Pell recipients



12.1%
first-generation students
attending college



1:19
19 students per
full time faculty member



327
students currently enrolled
are veterans

An estimated **\$2,991,519** in charitable donations and volunteer services are generated annually by faculty, staff, and students.

- **\$374,761** donated to local charitable organizations by faculty, staff, and students.
- **\$2,616,758** of volunteer time by faculty, staff, and students.



A member of Minnesota State



MINNESOTA STATE

prepared by *Parker Phillips*
assess. analyze. assert!
January 2023

ACCESS THE FULL REPORT [MINNESOTASTATE.EDU/IMPACT](https://minnesotastate.edu/impact)